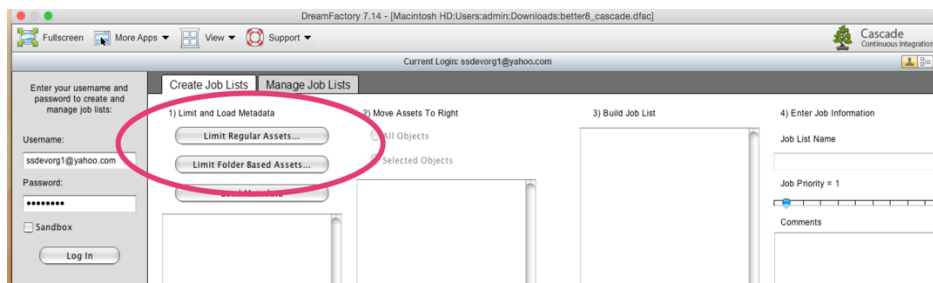


Create Better Profile & Permission Set Migrations

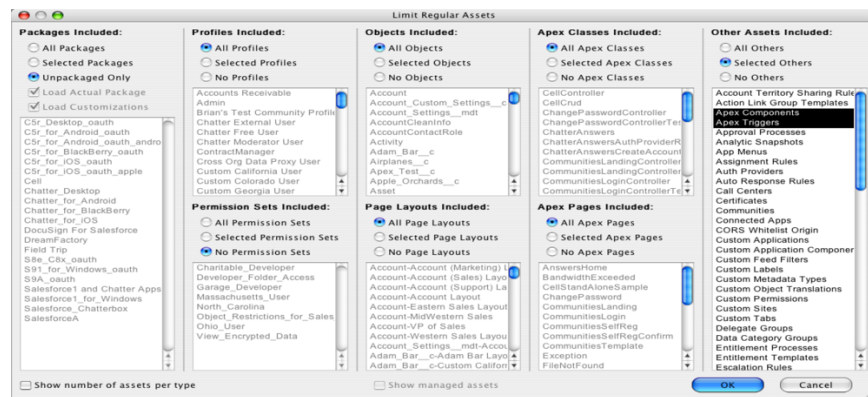
DreamFactory's Cascade provides continuous integration for salesforce. Based upon your feedback, we are extending Cascade's already extensive functionality to provide:

- Partial metadata migration for Profiles, Permissions Sets and Translations
- Prioritize job lists
- Combine job lists while retaining chain of custody information
- Better user interface to create job lists

To select the appropriate assets, the Cascade user should first click on the appropriate button to **Limit Regular Assets** or **Limit Folder Based Assets**.



The following dialogue will now open to allow the Cascade user to select the assets they wish to include in the job list.



Here, users can select from the following meta options to include in the Snapshot:

- **Packages** – (All Packages or Unpackaged Data) All Packages includes information about applications installed in the org. Check Unpackaged Data if not pushing custom applications
- **Profiles Included** - Select All, Individual or No Profiles
- **Permission Sets** – Select All, Individual or No Permission
- **Objects Included** - Select All, Individual or No Objects
- **Page Layouts** – Select All, Individual or No Page Layouts
- **Apex Classes** – Select All, Individual or No Apex Classes
- **Apex Pages** – Select All, Individual or No Apex Classes
- **Other Information** – Check this option to include Apex Components, Apex Triggers, Workflows, Custom Object Translations, Translations, Flows, Sharing Rules, Groups, Settings, Approval Process,

Home Page Layouts, Home Page Components, Queues, Report Types, Resources (static resources), Roles, Scontrols, and so on.

Note

Because Profiles are junction objects in Salesforce, it is necessary to select the Profile, as well as: All Objects, All Permission Sets, All Page Layouts, All Apex Classes, All Apex Pages, and at least, Apex Components, Apex Triggers, and Workflows from the **Other** column. This will return a complete Profile for migration.