

SnapShot Super Select Feature Release Notes

These release notes support the new SnapShot Super Select feature.

Contents:

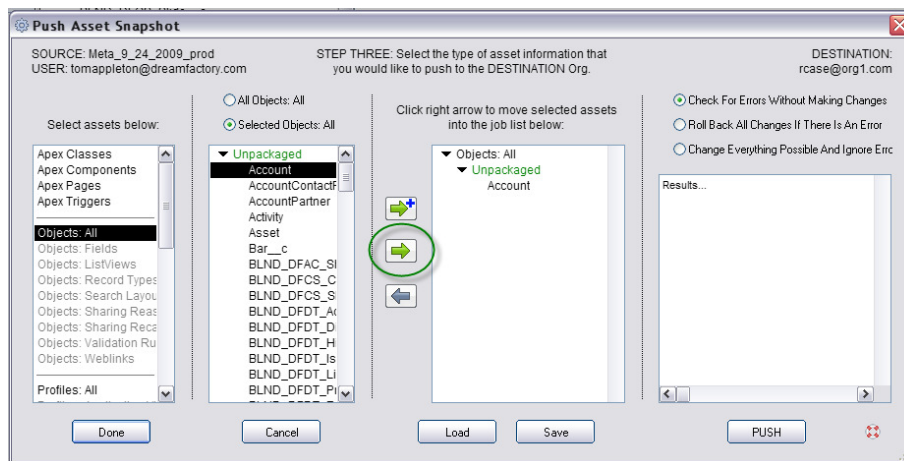
1. Overview of SnapShot Super Select Feature
2. Instructions on How to Access the Super Select Feature
3. Additional Feature Notes
4. Product Support

1. Overview of SnapShot Super Select Feature:

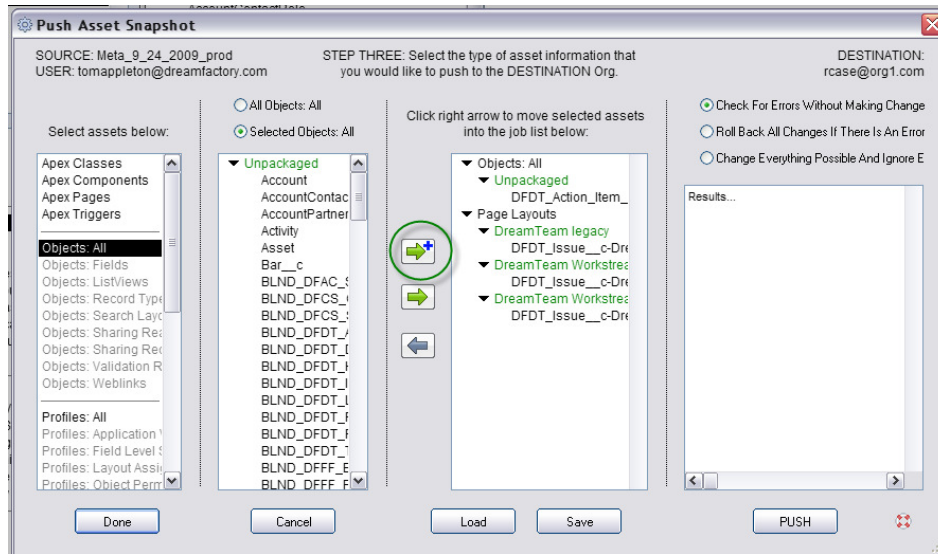
SnapShot has just added a new feature to the Asset SnapShot Push. The new Super Select feature extends the functionality of the Asset SnapShot Push to include all references to the selected Asset component. Now users have the ability to either use the Simple Select option to strictly add the selected Asset components to the Job List, or the Super Select option to add the selected Asset components in addition to all other assets that directly or indirectly reference those selected Asset components to the Job List. The Super Select feature is recursive.

These two select options include:

Simple Select – The Simple Select option enables users to select their desired assets and move them to the job list. The Simple Select can be accomplished by simply selecting the desired Asset and component and clicking the Green Arrow. Multiple components in each Asset can be selected at a time by using the Control and Shift keys.



Super Select – The Super Select option enables users to create an Asset Job List based on the selected Asset and all references to that Asset. The Super Select can be accomplished by simply selecting the desired Asset and component and clicking the Green Arrow with the Blue Plus. Multiple components in each Asset can be selected at a time by using the Control and Shift keys.




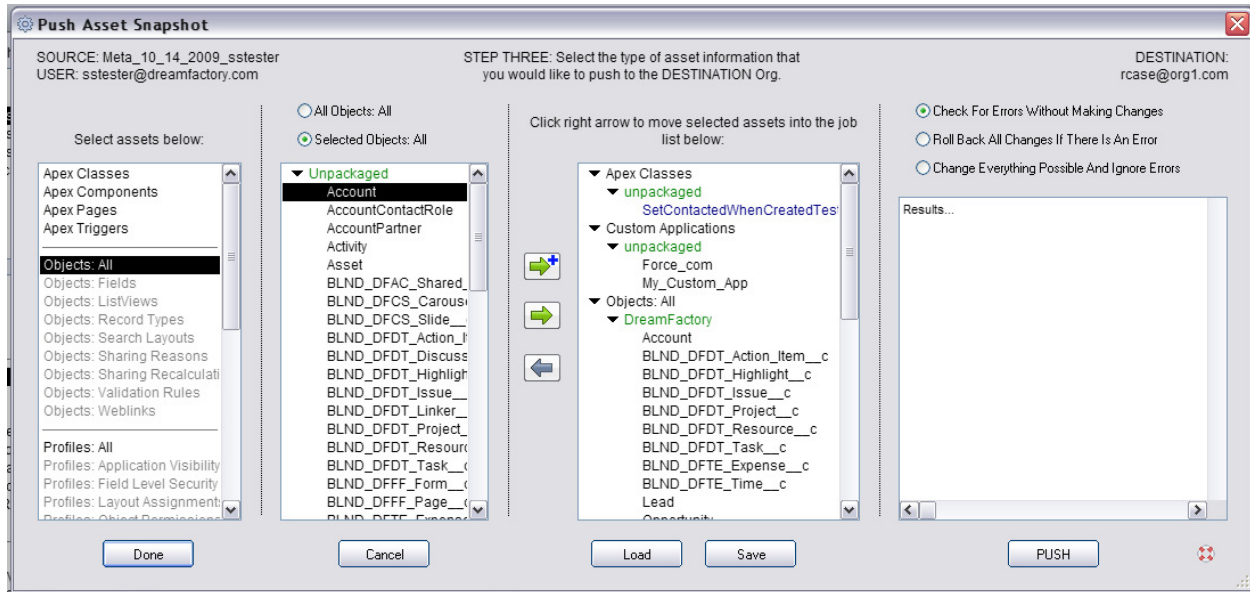
2. Instructions on How to Access the Super Select Feature:

To access the Super Select feature, simply follow the directions below:

1. Select the Source SnapShot from the Asset View
2. Click on the Options Menu and select Push Asset SnapShot
3. Log into your Destination Org and select to create a back up SnapShot or click the skip button.
4. Once in the Asset Push Screen select the desired Asset from the first column
5. Next, select your components from the second column



6. Click the  button to select the Super Select feature and move the selected components to the job list. This will populate the selected Asset components in addition to all references to that Asset component in to the job list.



7. Once the Job List has been populated, you can either save it for future usage, or you can select from the three push options and continue your deployment process.

3. Additional Feature Notes:

When using the Super Select feature, please bear in mind that building the additional references into the Job List may take some time pending on the size of the component selected as well as the references to that component that exist in that Org. To view how these reference lists are built, refer to the relationship palette located under the View Menu on the Asset Snapshot.

4. Product Support:

The purpose of this document is to highlight the new Snapshot Logger feature. Please direct all questions to DreamFactory Support at one of the following Support Options.

Live Chat – You can initiate a Live Chat with one of our Success Engineers by simply clicking on the Support Menu and selecting the Live Chat option.

Phone Support – You can contact our Support Engineers by phone at 1-877-577-3453 or by selecting the Phone Support option from the Support Menu.

Email Support – You can also email DreamFactory Support at support@dreamfactory.com.

Support Wiki – You can access additional information by accessing the DreamFactory Support Wiki online at <http://dreamfactory.pbworks.com/SnapShot>.

DreamFactory Support is available 5:00 AM until 5:00 PM PST (8:00 AM – 8:00PM EST) M-F.