

SnapShot Feature Release Notes

These release notes support the new Dependent Picklist vs. Controlling Field Matrix.

Contents:

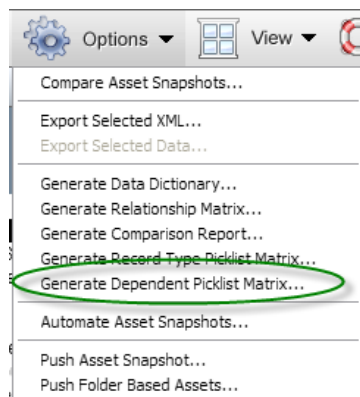
1. Overview of the Dependent Picklist vs. Controlling Field Matrix
2. Product Support

1. Overview of the Dependent Picklist vs. Controlling Field Matrix

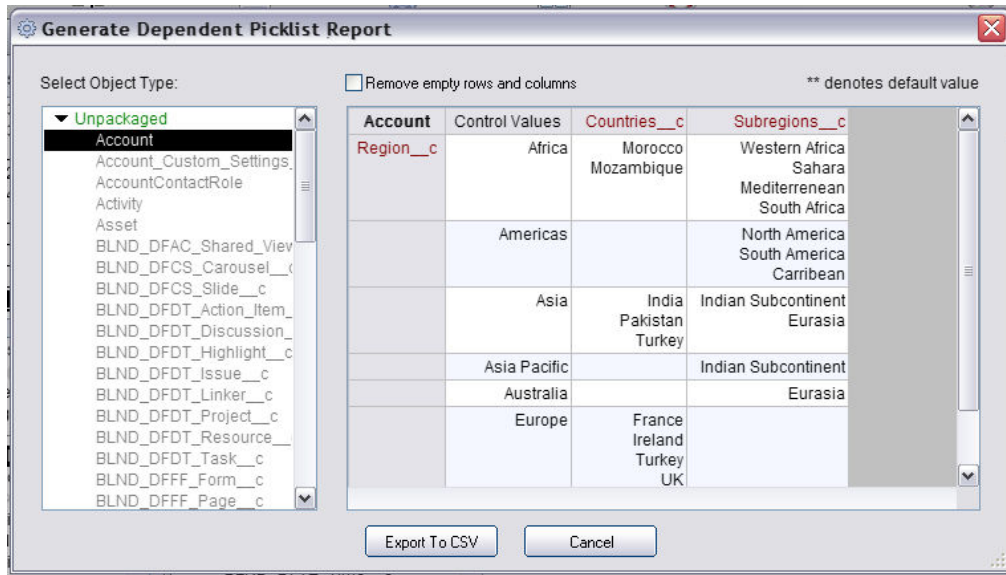
SnapShot has just added the Dependent Picklist vs. Controlling Field Matrix which allows users to view a Record Type vs. Picklist matrix for selected objects in the Asset SnapShot. This matrix can be saved in a CSV format.

To access the Dependent Picklist vs. Controlling Field Matrix, follow the instructions below:

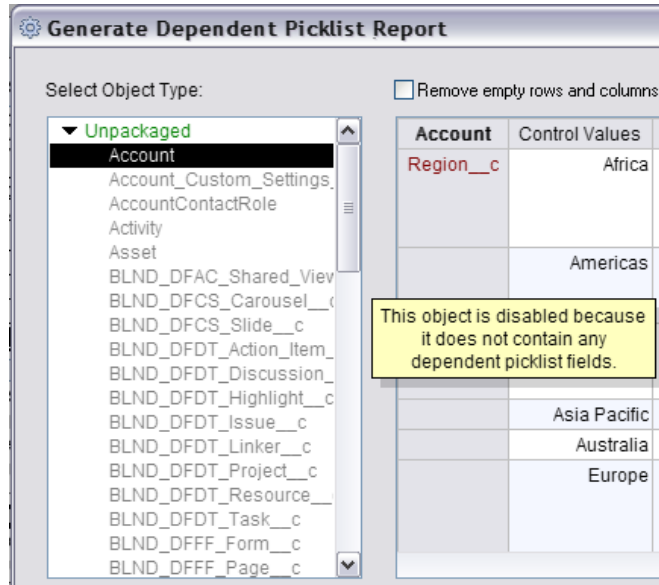
- A. Go to the Asset Snapshot
- B. Click on the Options Menu
- C. Select the Generate Dependent Picklist Matrix option



D. Once selected, the Generate Dependent Picklist Report dialog box will appear.

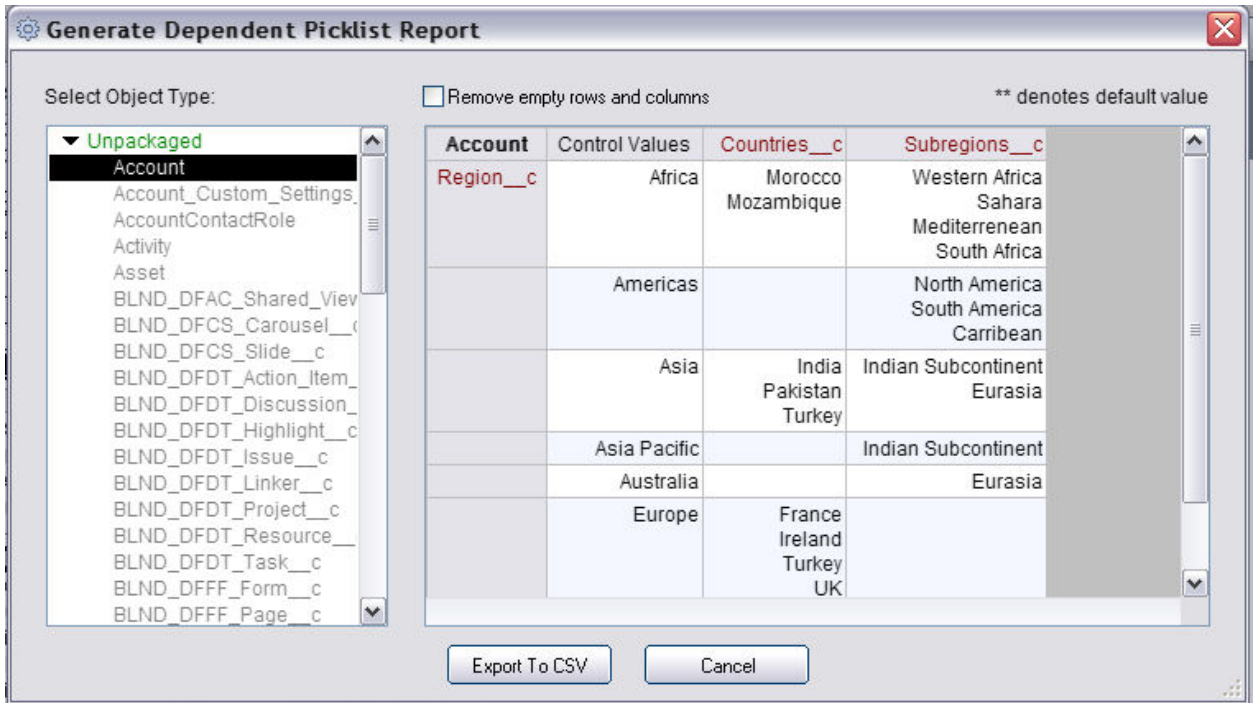


E. To use the matrix, first select an object from the list on the left side of the dialog box. Note: if an object is not highlighted, it means that it does not have a picklist tied to it.

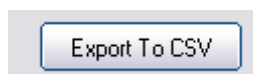


- F. To populate the matrix, simply select an Object from the left hand box. Once selected, a list of Object fields will populate the first column, followed by the picklist values in the other columns. The controlling fields are displayed across the top of the matrix.

Note: ** denotes the default value. Also, if you see red, it means that there are picklist values present for the specific record type.



- G. You can also export the results out to a CSV file by clicking on the Export To CSV button on the bottom of the dialog box.



2. Product Support:

The purpose of this document is to highlight the new Asset Comparison Report. Please direct all questions to DreamFactory Support at one of the following Support Options.

Live Chat – You can initiate a Live Chat with one of our Success Engineers by simply clicking on the Support Menu and selecting the Live Chat option.

Phone Support – You can contact our Support Engineers by phone at 1-877-577-3453 or by selecting the Phone Support option from the Support Menu.

Email Support – You can also email DreamFactory Support at support@dreamfactory.com.

Support Wiki – You can access additional information by accessing the DreamFactory Support Wiki online at <http://dreamfactory.pbworks.com/SnapShot>.

DreamFactory Support is available 5:00 AM until 5:00 PM PST (8:00 AM – 8:00PM EST) M-F.