

Snapshot Feature Release Notes

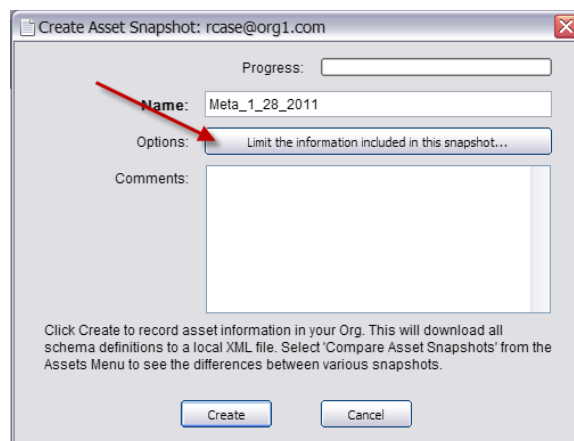
These release notes support the new Snapshot creation limitations and additional analytical data that have been added to the Asset View.

Contents:

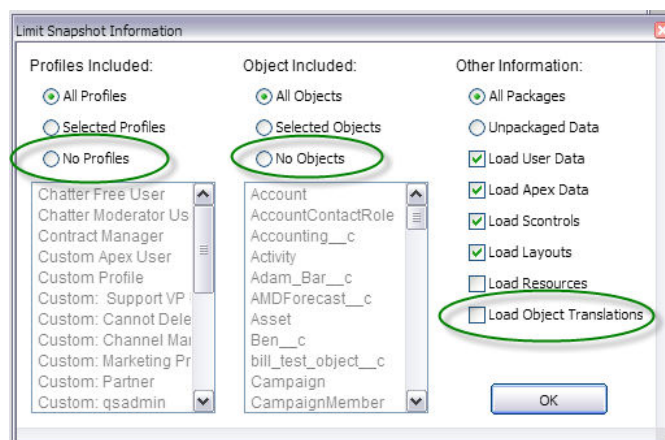
1. Overview of the Snapshot creation limitations
2. Overview of the Additional Analytical Data added to the Asset View
3. Product Support

1. Overview of the Snapshot Creation Limitations

Upon creating a Snapshot, three new options have been added to the “Limit the information included in the snapshot” dialog.

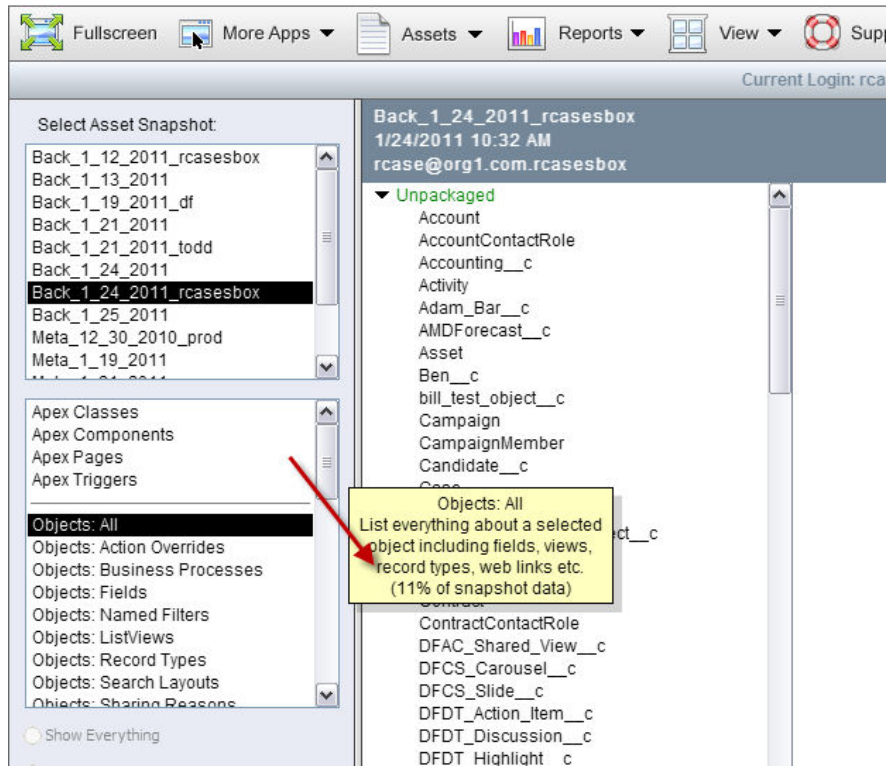


Now, once the user clicks on the Limit the information button, they will see that they can now choose No Profiles, No Objects and also add Object Translations to their Snapshot if they wish. Previously, users only had the options to choose all or selected profiles and objects.



2. Overview of the Additional Analytical Data added to the Asset View

Users now have the ability to see what percentage of the Asset Snapshot is compiled by individual Assets. By hovering over a particular Asset in the Asset list on the left hand side, users can easily see what percentage of the Asset Snapshot is comprised of Objects, or Page Layouts, etc...



3. Product Support:

The purpose of this document is to highlight the new enhancements made to the Asset Snapshot. Please direct all questions to DreamFactory Support at one of the following Support Options.

Live Chat – You can initiate a Live Chat with one of our Success Engineers by simply clicking on the Support Menu and selecting the Live Chat option.

Phone Support – You can contact our Support Engineers by phone at 1-877-577-3453 or by selecting the Phone Support option from the Support Menu.

Email Support – You can also email DreamFactory Support at support@dreamfactory.com.

Support Wiki – You can access additional information by accessing the DreamFactory Support Wiki online at <http://dreamfactory.pbworks.com/SnapShot>.

DreamFactory Support is available 5:00 AM until 5:00 PM PST (8:00 AM – 8:00PM EST) M-F.