

Snapshot Feature Release Notes

These release notes support new enhancements added to Snapshot including the Snapshot Menu Changes and the new Profiles vs. Page Layout Matrix Report.

Contents:

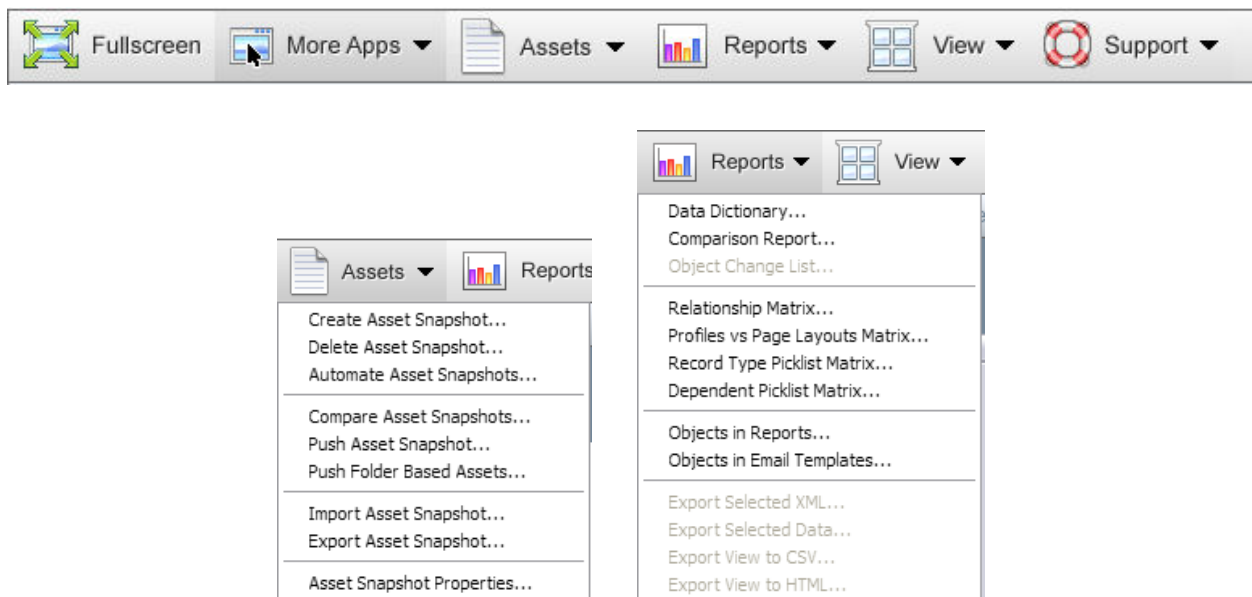
1. Snapshot Menu Changes
2. Overview of the Profiles vs. Page Layout Matrix Report
3. Product Support

1. Snapshot Menu Changes

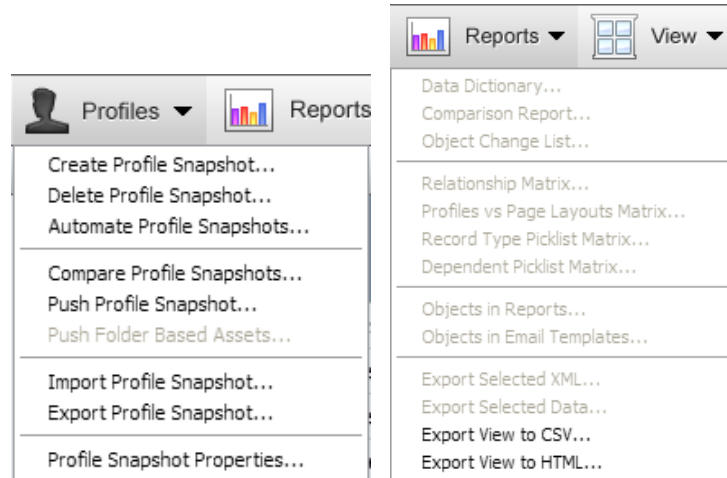
The addition of all of the advanced reporting functionality to Snapshot has lead to the restructuring of all of the Menus in Snapshot including the creation of the Reports Menu which has replaced the Options Menu in the Asset, Profile and Object Snapshot dialogs.

Below are screen shots of the new menus for the Asset, Profile and Object Snapshots.

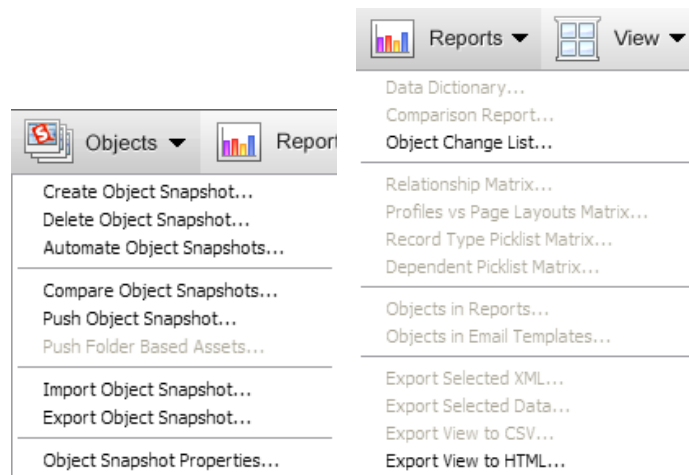
Asset Snapshot:



Profile Snapshot:



Object Snapshot:

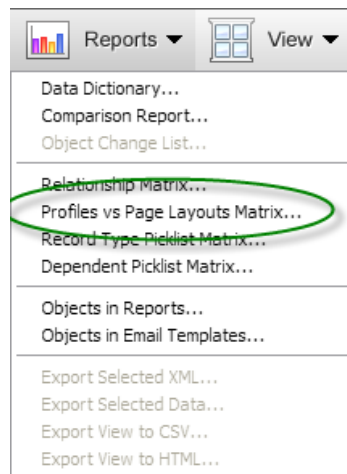


2. Overview of the Profiles vs. Page Layout Matrix Report

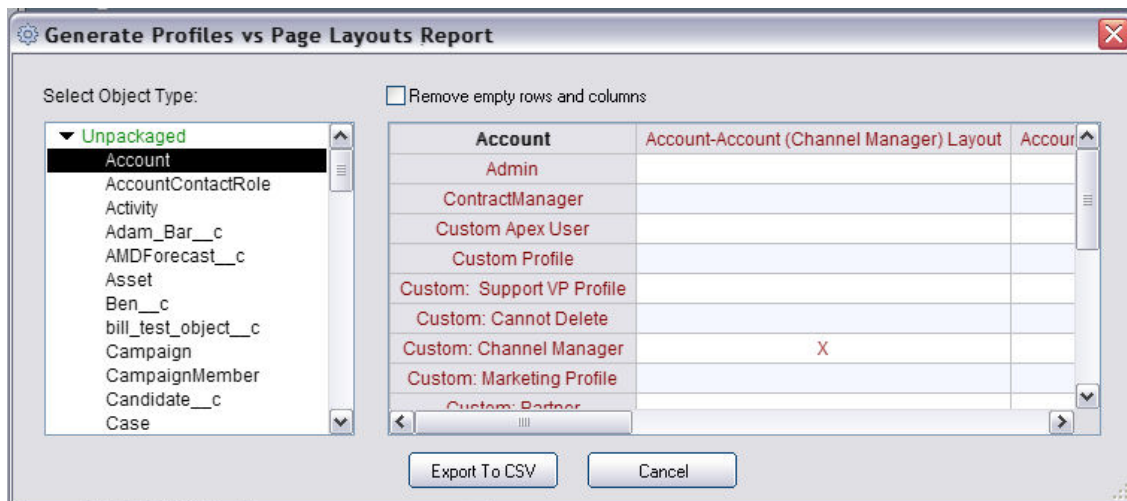
SnapShot has just added the Profiles vs. Page Layout which allows users to view which profiles have visibility to which page layout. The Profiles vs. Page Layout Matrix Report is located in the Asset SnapShot. This matrix report can be saved and exported in a CSV format.

To access the Profiles vs. Page Layout Matrix Report, follow the instructions below:

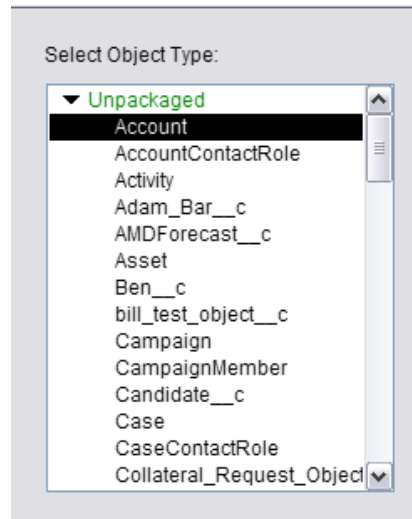
- A. Go to the Asset Snapshot
- B. Click on the Reports Menu
- C. Select the Profiles vs. Page Layout Matrix Report option



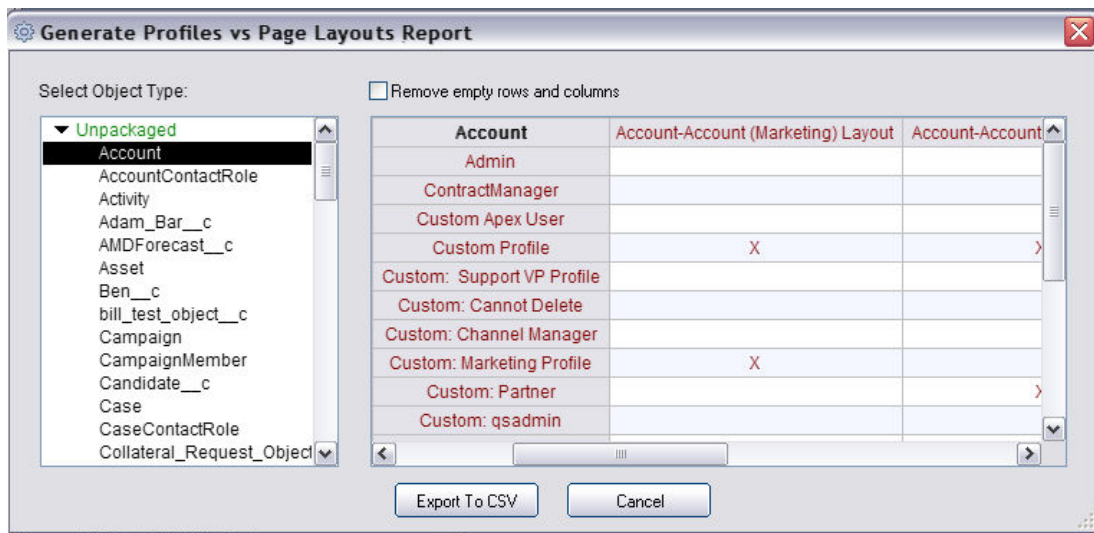
- D. Once selected, the Generate Profiles vs. Page Layout Matrix Report dialog box will appear.



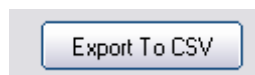
- E. First select an object from the list on the left side of the dialog box.



- F. To populate the matrix, simply select an Object from the left hand box. Once selected, a list of the Profiles will be displayed on the left while the Object Page Layouts will be listed on the top. Simply scroll across to see what profiles have visibility rights to which page layout.



- G. You can also export the results out to a CSV file by clicking on the Export To CSV button on the bottom of the dialog box.



3. Product Support:

The purpose of this document is to highlight the Menu changes, as well as the Profiles vs. Page Layout Matrix Report. Please direct all questions to DreamFactory Support at one of the following Support Options.

Live Chat – You can initiate a Live Chat with one of our Success Engineers by simply clicking on the Support Menu and selecting the Live Chat option.

Phone Support – You can contact our Support Engineers by phone at 1-877-577-3453 or by selecting the Phone Support option from the Support Menu.

Email Support – You can also email DreamFactory Support at support@dreamfactory.com.

Support Wiki – You can access additional information by accessing the DreamFactory Support Wiki online at <http://dreamfactory.pbworks.com/SnapShot>.

DreamFactory Support is available 5:00 AM until 5:00 PM PST (8:00 AM – 8:00PM EST) M-F.