

SnapShot Feature Release Notes

These release notes support the Object Field and Object Picklist Value Usage Reports that have been added to the Object Snapshot.

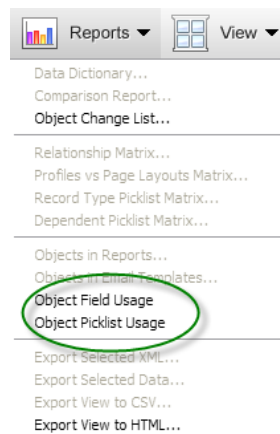
Contents:

1. Overview of the Object Field and Object Picklist Value Usage Reports Features
2. Product Support

1. Overview of the Object Fields and Object Picklist Value Report Features

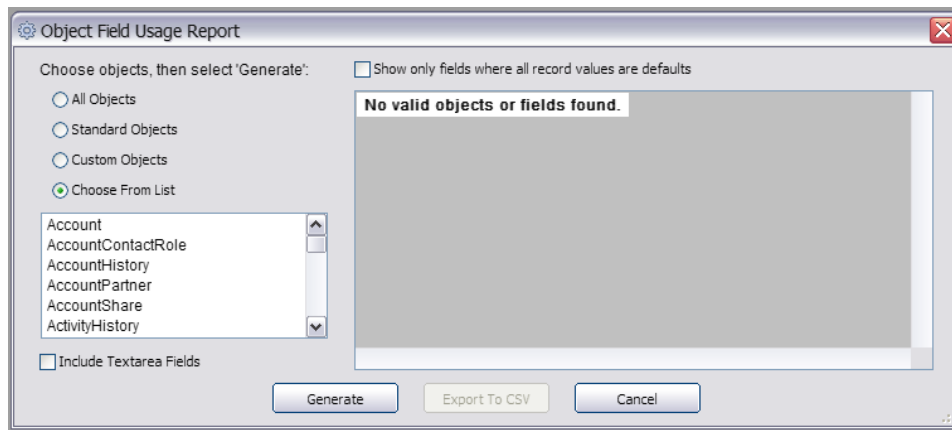
SnapShot has just added two new reports to the Object Snapshot that allows users to view the usage of both object fields and object picklists in your Salesforce Org. These two reports include:

- A. Object Field Usage Report
- B. Object Picklist Usage Report



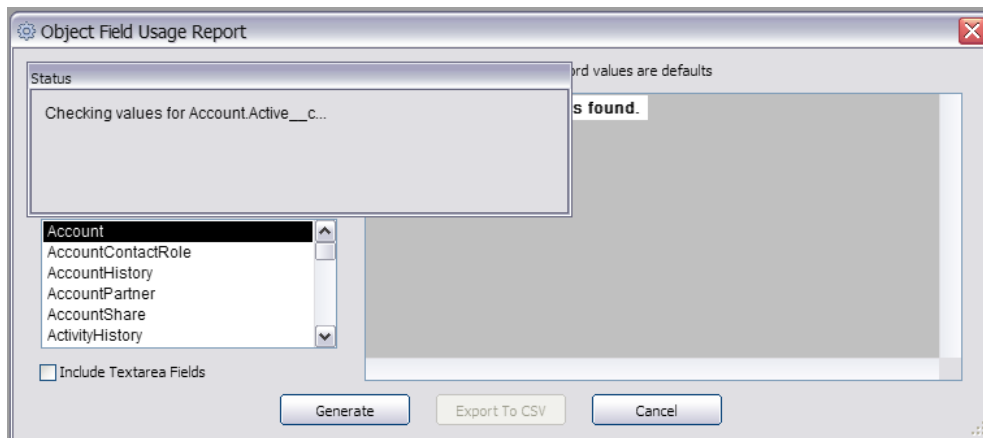
A. Object Field Usage Report

This report allows users to easily see what fields are being used in your Salesforce Org. This report will also display a count of the records of where that field is set to the default value. The primary use case for this report is to locate objects and fields that are never used.



To use this report follow the steps below:

1. Click on the Reports Menu and select the Object Field Usage report
2. Next, select which objects you want to include from one of the following four options:
 - All Objects
 - Standard Objects
 - Custom Objects
 - Choose From List
3. Once you have selected which objects you want to include, click the generate button. This will display all of the fields, regardless if they have been used or not. Once the generate button is clicked, a small dialog box displaying the fields that are being searched is displayed in the top left corner of the dialog.



4. Upon completion, the dialog box will display all of the fields from the selected objects broken into three columns.

Name – This column displays the object and field name

Type – This columns displays the field type. Examples of Types include: string, picklist, currency, datetime, date, multipicklist, url, textarea, reference, integer, double and phone to name a few.

Empty – This column displays the null value (fields that have never been set)

Default – This column displays the fields that have been set to the default values. (boolean will display false)

Other – This columns displays any values that have not been set to a default or are empty.

Total – This columns displays the total amount of records.

Empty % - This column displays the number in the Empty column divided by the Total column

Default % - This columns displays the number in the Default column divided by the Total column

Other % - This columns displays the number in the Other column divided by the Total column

Object Field Usage Report

Choose objects, then select 'Generate':

- All Objects
- Standard Objects
- Custom Objects
- Choose From List

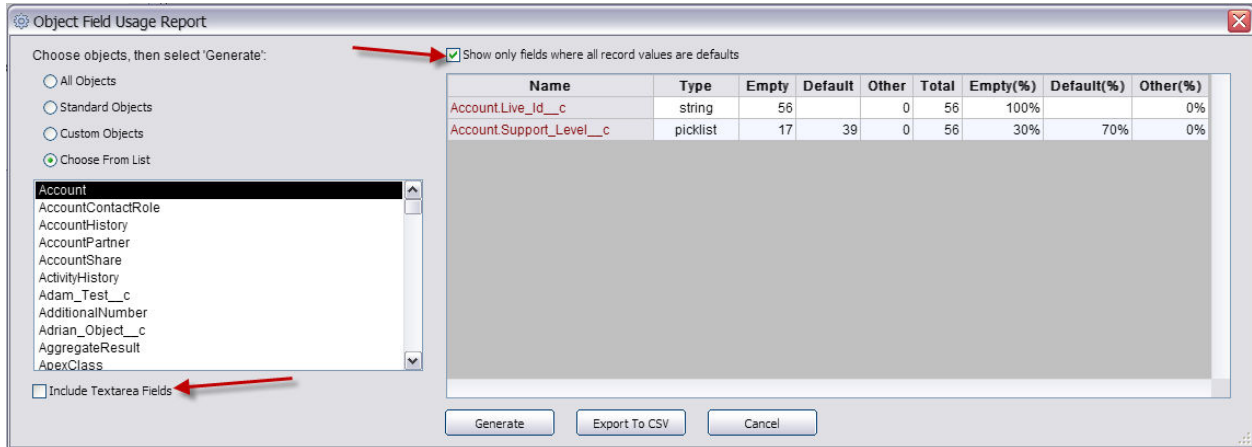
Show only fields where all record values are defaults

Name	Type	Empty	Default	Other	Total	Empty(%)	Default(%)	Other(%)
Account.AccountNumber	string	45		11	56	80%		20%
Account.Active__c	picklist	43		13	56	77%		23%
Account.AnnualRevenue	currency	37		19	56	66%		34%
Account.BillingCity	string	17		39	56	30%		70%
Account.BillingCountry	string	25		31	56	45%		55%
Account.BillingPostalCode	string	26		30	56	46%		54%
Account.BillingState	string	16		40	56	29%		71%
Account.BillingStreet	textarea	19		37	56	34%		66%
Account.CurrencyIsoCode	picklist	0	54	2	56	0%	96%	4%
Account.CustomerPriority__c	picklist	46		10	56	82%		18%
Account.datetime__c	datetime	55		1	56	98%		2%
Account.Fax	phone	38		18	56	68%		32%
Account.Industry	picklist	27		29	56	48%		52%

Include Textarea Fields

Generate Export To CSV Cancel

If you want to include only those fields where all record values are equal to the default value, simply check the Show only fields where all record values are defaults check box located right above the results matrix.



The check box in the bottom left titled 'Include Textarea Fields' allow users to include Textarea fields that tend to be much larger and can also take longer to load.

B. Object Picklist Usage

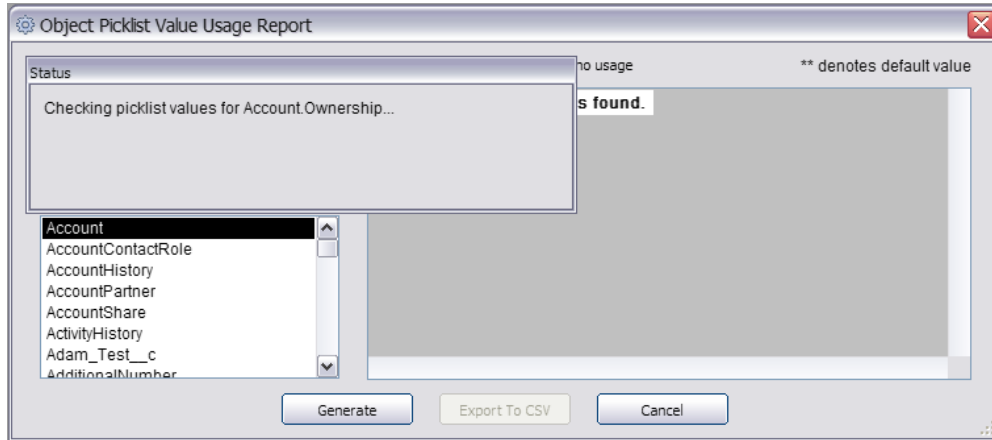
This report allows users to easily view what picklist fields and picklist values are being used. For example, this report allows you to retrieve all Account picklists and provides a count of which ones are being used.



To use this report follow the steps below:

1. Click on the Reports Menu and select the Object Picklist Value Usage report
2. Next, select which objects you want to include from one of the following four options:
 - All Objects
 - Standard Objects
 - Custom Objects
 - Choose From List

- Once you have selected which objects you want to include, click the generate button. This will display the total object records, all of the picklist fields, and the picklist values regardless if they have been used or not. Once the generate button is clicked, a small dialog box displaying the fields that are being searched is displayed in the top left corner of the dialog.



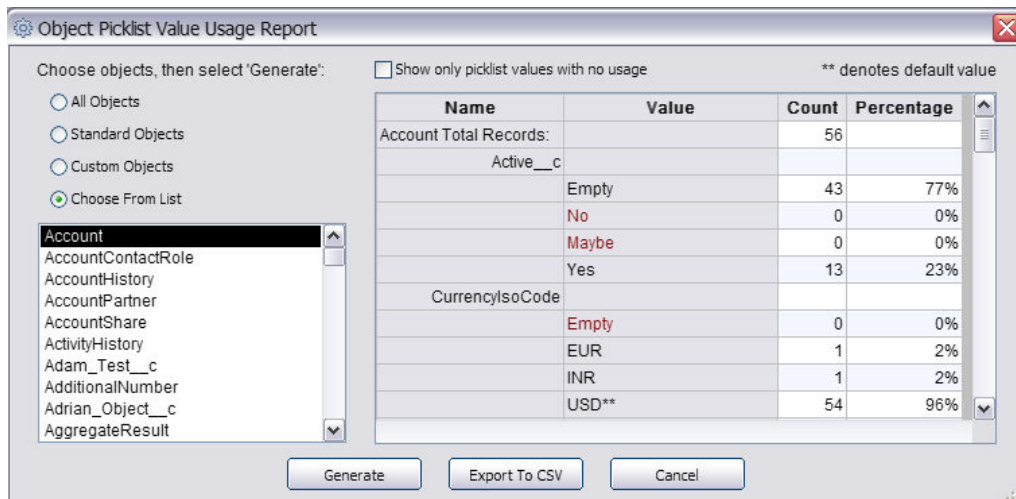
- Upon completion, the dialog box will display all of the fields from the selected objects broken into three columns. Values displayed in black signify the values that are not default values, while values displayed in red means that there are no changed values and that the field or value is not being used.

Name – This column displays the Total object Records and the picklist field name

Value – This column displays the picklist values

Count – This column displays the number of records where the fields are being used broken down by Object and by picklist value.

Percentage – This column displays how many times this picklist value has been used divided by the total amount of records.



If users want to include only those picklist values that have not been used, simply check the Show only picklist values with no usage check box located right above the results matrix.

Object Picklist Value Usage Report

Choose objects, then select 'Generate': Show only picklist values with no usage ** denotes default value

All Objects
 Standard Objects
 Custom Objects
 Choose From List

Account
AccountContactRole
AccountHistory
AccountPartner
AccountShare
ActivityHistory
Adam_Test__c
AdditionalNumber
Adrian_Object__c
AggregateResult

Name	Value	Count	Percentage
Account Total Records:		56	
Active__c			
	No	0	0%
	Maybe	0	0%
CurrencyIsoCode			
	Empty	0	0%
CustomerPriority__c			
Industry			
	Chemicals	0	0%
	Communications	0	0%
	Engineering	0	0%

Generate Export To CSV Cancel

2. Product Support:

The purpose of this document is to highlight the Delta Select feature. Please direct all questions to DreamFactory Support at one of the following Support Options.

Live Chat – You can initiate a Live Chat with one of our Success Engineers by simply clicking on the Support Menu and selecting the Live Chat option.

Phone Support – You can contact our Support Engineers by phone at 1-877-577-3453 or by selecting the Phone Support option from the Support Menu.

Email Support – You can also email DreamFactory Support at support@dreamfactory.com.

Support Wiki – You can access additional information by accessing the DreamFactory Support Wiki online at <http://dreamfactory.pbworks.com/SnapShot>.

DreamFactory Support is available 5:00 AM until 5:00 PM PST (8:00 AM – 8:00PM EST) M-F.