

SnapShot Feature Release Notes

These release notes support the new Delta Select feature added to the Asset SnapShot Push.

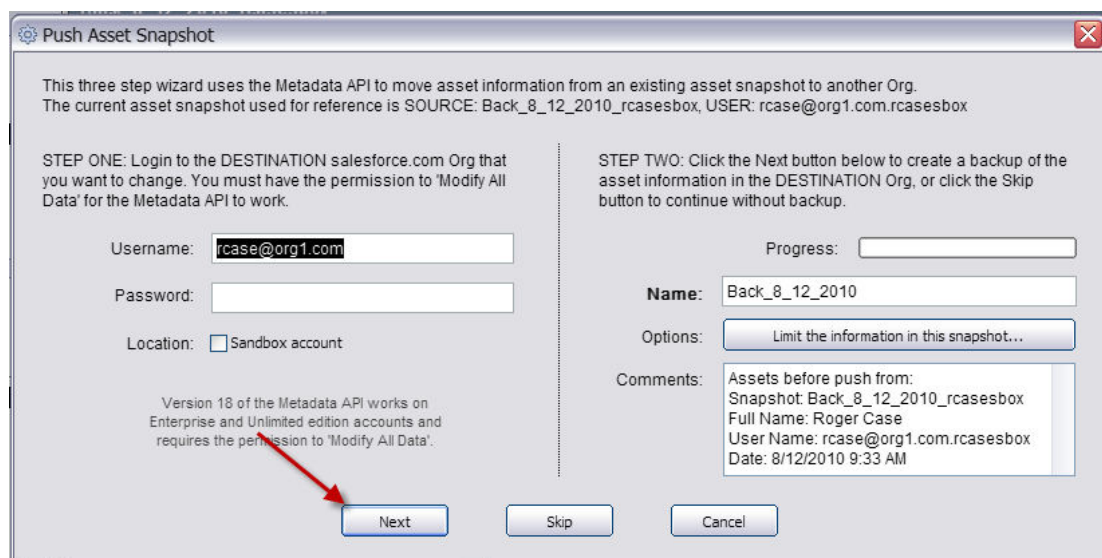
Contents:

1. Overview of the Delta Select Feature
2. Product Support

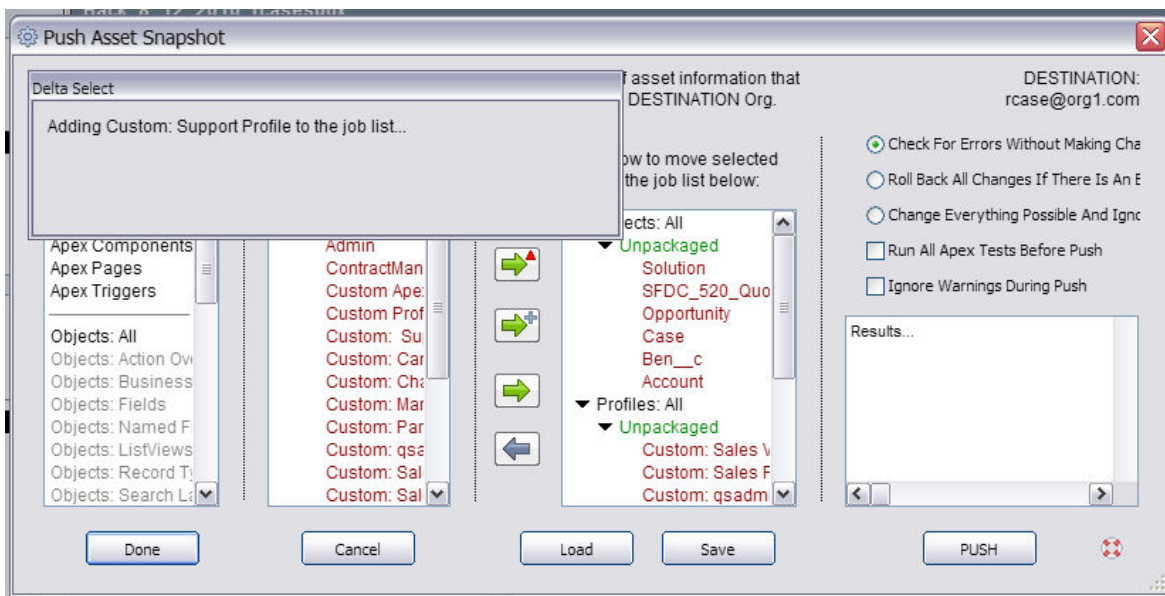
1. Overview of the Delta Select Feature

SnapShot has just added the newest push option to the Asset SnapShot Push feature called the Delta Select. The Delta Select enables you to create a Job List consisting of solely the differences between the two Orgs. Using the Delta Select option will reduce the amount of time it takes to deploy these differences by simply creating a differences only Job List. It mitigates risk by ensuring that any related assets are not left out.

To use the Delta Select option, you must first click the Next button and create a backup Snapshot of the Destination Org on the login dialog.



Once the backup Snapshot has completed, you will see all of the components that have differences displayed in red in the second column. Once you have chosen your desired Asset and component(s) and then clicked on the Delta Select button, Snapshot will then begin to compile a list of all of the relationships tied to the selected Asset that are different between the two Orgs. A dialog box displaying the Asset being searched will appear in the top left of the Push dialog box. The results of the Delta Select will be displayed in the Job List.



2. Product Support:

The purpose of this document is to highlight the Delta Select feature. Please direct all questions to DreamFactory Support at one of the following Support Options.

Live Chat – You can initiate a Live Chat with one of our Success Engineers by simply clicking on the Support Menu and selecting the Live Chat option.

Phone Support – You can contact our Support Engineers by phone at 1-877-577-3453 or by selecting the Phone Support option from the Support Menu.

Email Support – You can also email DreamFactory Support at support@dreamfactory.com.

Support Wiki – You can access additional information by accessing the DreamFactory Support Wiki online at <http://dreamfactory.pbworks.com/SnapShot>.

DreamFactory Support is available 5:00 AM until 5:00 PM PST (8:00 AM – 8:00PM EST) M-F.