

## SnapShot Feature Release Notes

These release notes support the new enhancements made to Asset SnapShot including: the new Asset History Report, new values added to the Object Properties section of the Data Dictionary and enhanced deployment messaging regarding the pushing of Managed Packages.

### Contents:

1. Overview of the new enhancements made to the Asset Snapshot including:
  - A. Asset History Report
  - B. New values added to the Object Properties section on the Data Dictionary
  - C. Enhanced deployment messaging regarding the pushing of Managed Packages.
2. Product Support

## 1. Overview of new enhancements made to the Asset Snapshot

### A. Asset History Report –

The Asset History Report is the newest report added to the Asset Snapshot Reports Menu. The Asset History Report allows you to see when assets were created, last modified and by whom.

**Note:** *All Assets that are grayed out are not able to be displayed due to the fact that they are not supported by the Salesforce Metadata API. In addition, all standard objects and standard workflows are not currently supported due to a Salesforce Metadata API limitation.*

The Asset properties that can be viewed in this report are the following: (\* signifies the default properties)

**Asset Type\*** - This field indicates what type of asset has been selected.

**Package Name\*** - This field indicates what package, if any, the asset is part of; otherwise this value is “unpackaged”.

**Asset Name\*** - This field is the name of the selected asset.

**Last Modified By Id** – This field displays the Id of the user who last modified the asset.

**Last Modified Date\*** This field displays the date and time the asset was last modified.

**Last Modified By Name\*** - This field displays the name of the user who made the last modification of the selected asset.

**Created By Id** – This field displays the Id of the user that created the asset.

**Created By Name** – This field lists the name of the user who created the asset.

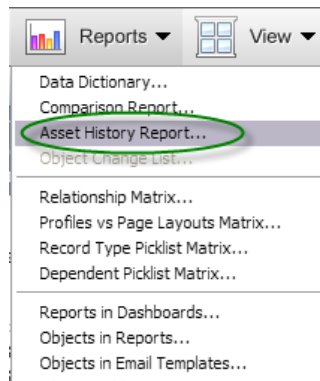
**Created Date** – This field displays the date and time that the asset was created.

**Id** – Id is an identifier that Salesforce assigns to every asset, not the record ID (some asset types can be listed by using this ID).

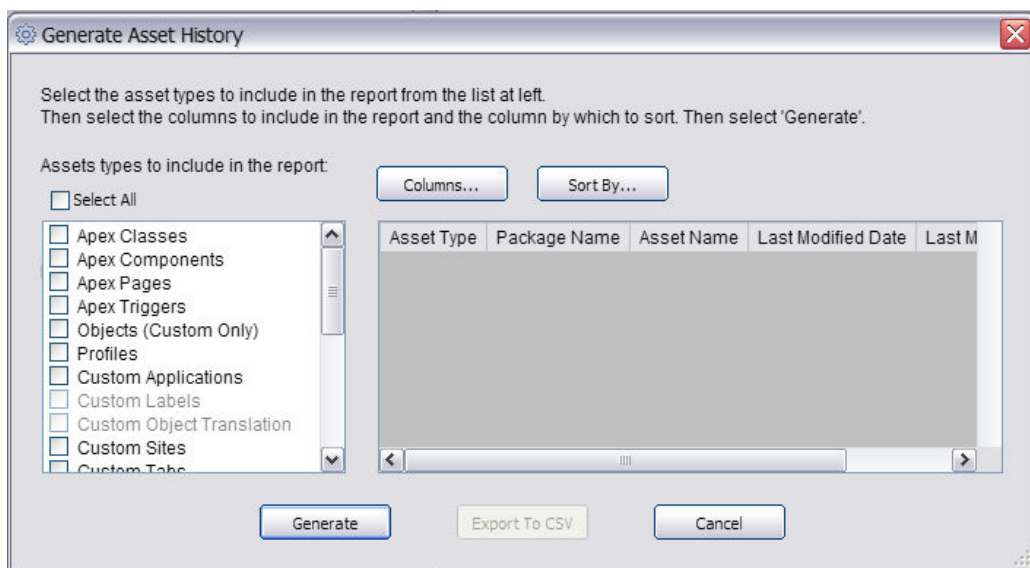
**Managed State** – The Managed State is the Salesforce state of Managed Packages. Assets that are not part of a package will be displayed as unmanaged, while those that are part of a package will show their Managed State as either unmanaged, installed, etc.

To access the Asset History Report, simply follow the directions below.

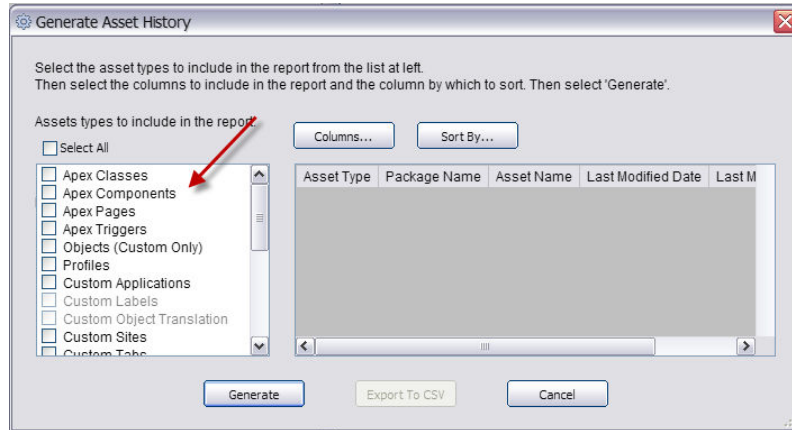
1. Click on the Reports Menu and select the Asset History Report option.



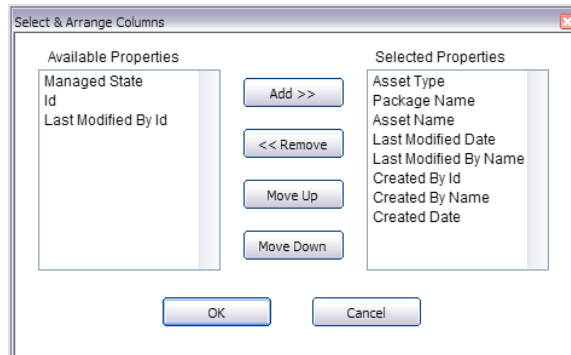
2. Once selected, the Generate Asset History dialog box will appear. This is where you select your desired asset types and displayed columns and how the report should be sorted.



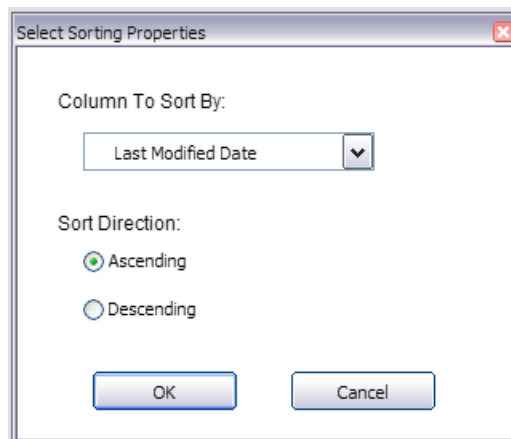
- Next, select either an individual or multiple assets by checking the box on the left hand side of the dialog.



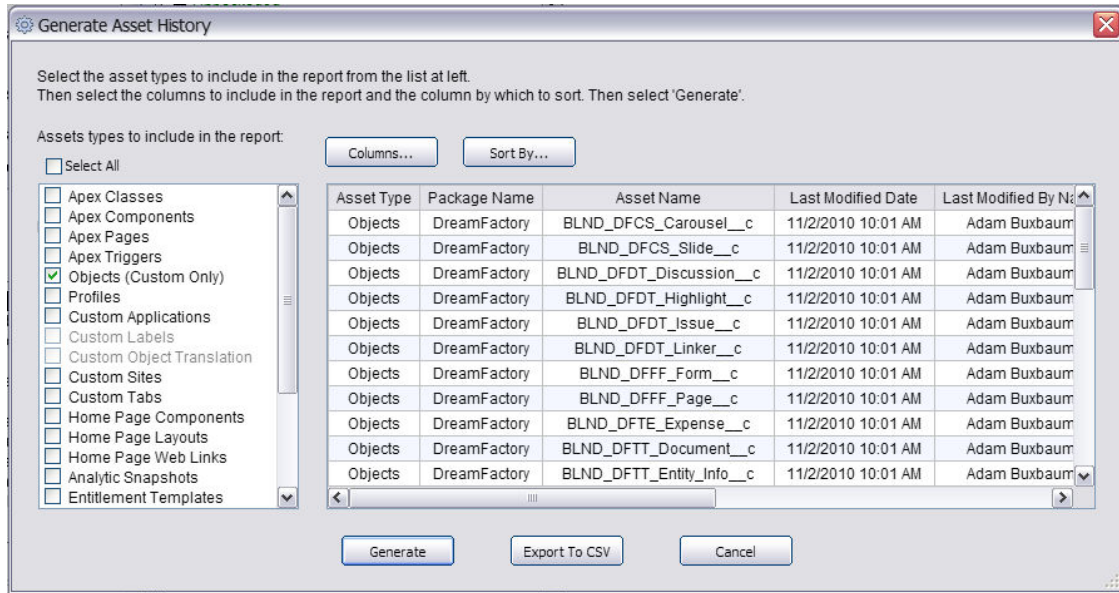
- After you have selected your desired assets, click on the Columns button to select the columns you would like to display information for. You can also arrange the columns in your desired order by using the Move Up and Move Down buttons.



You can also select from multiple sorting properties by clicking on the Sort By button located next to the Columns button at the top.



- Once you have selected all of your properties, click the Generate button at the bottom and the dialog box will populate with the Asset History Information for the selected asset(s).



You can also export the results out to a CSV by clicking on the Export To CSV button at the bottom of the dialog.

## B. New Values added to the Object Properties section on the Data Dictionary -

Snapshot has also added the following new values to the Object Properties section of the Data Dictionary.

**Last Modified Date**

**Last Modified By Name**

**Created By Id**

**Created By Name**

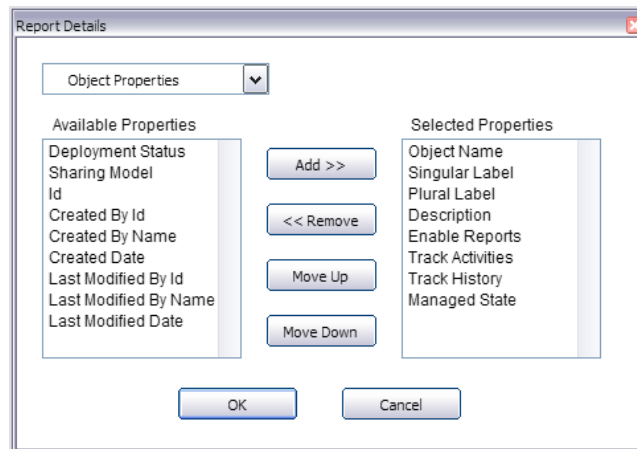
**Created Date**

**Last Modified By Id**

**Id**

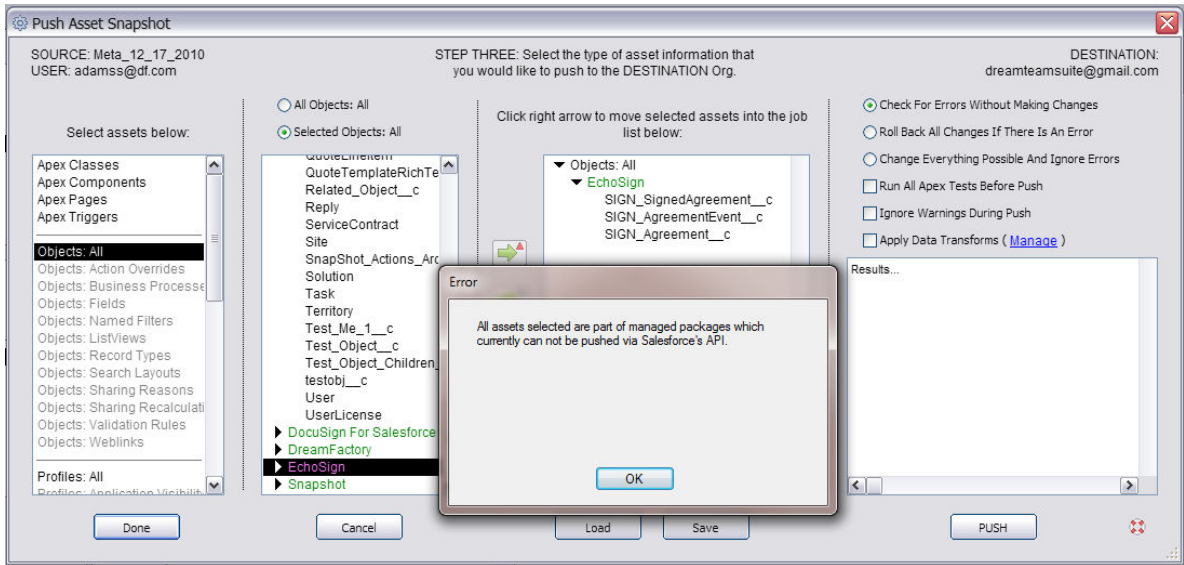
**Managed State**

Users can now add any or all of the these values to their Data Dictionary report.



### C. Enhanced deployment messaging regarding the pushing of Managed Packages -

The Salesforce Metadata API does not currently support the ability to push assets belonging to Managed Packages. Snapshot has added new deployment messaging regarding Managed Packages. Now when users attempt to push these assets, Snapshot will not push any belonging to managed packages and will alert users that these will not be pushed by a pop up box (if the user is strictly pushing these assets) or an additional message in the results box (if the user is pushing other assets in addition to those rejected).



## 2. Product Support:

The purpose of this document is to highlight the new enhancements made to the Asset Snapshot. Please direct all questions to DreamFactory Support at one of the following Support Options.

**Live Chat** – You can initiate a Live Chat with one of our Success Engineers by simply clicking on the Support Menu and selecting the Live Chat option.

**Phone Support** – You can contact our Support Engineers by phone at 1-877-577-3453 or by selecting the Phone Support option from the Support Menu.

**Email Support** – You can also email DreamFactory Support at [support@dreamfactory.com](mailto:support@dreamfactory.com).

**Support Wiki** – You can access additional information by accessing the DreamFactory Support Wiki online at <http://dreamfactory.pbworks.com/SnapShot>.

DreamFactory Support is available 5:00 AM until 5:00 PM PST (8:00 AM – 8:00PM EST) M-F.