

SnapShot Feature Release Notes

These release notes support the new Asset Comparison Report.

Contents:

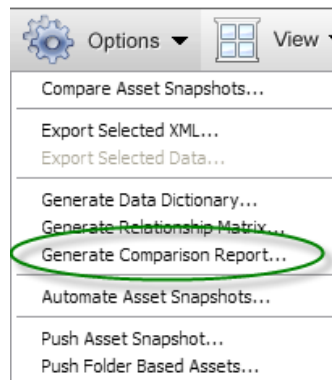
1. Overview of the Asset Comparison Report
2. Product Support

1. Overview of the Asset Comparison Report

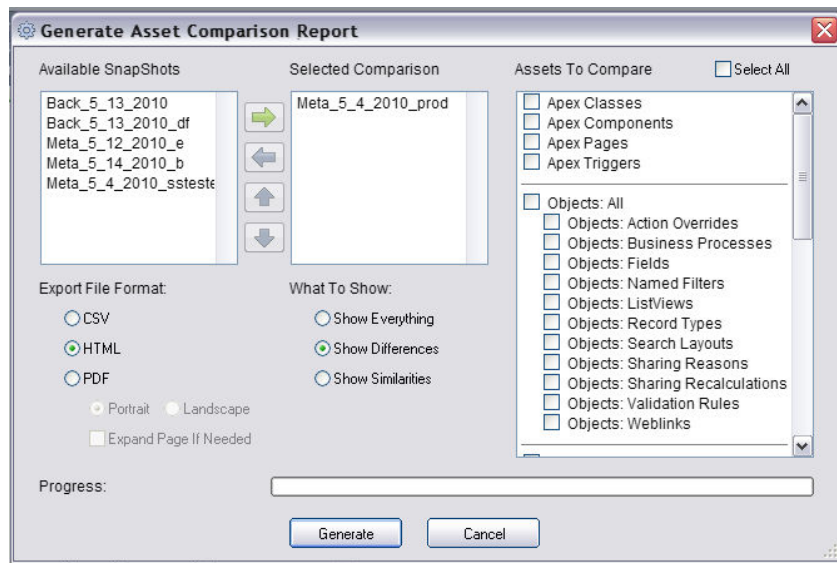
SnapShot has just added the Asset Comparison Report which allows users to create a report that shows a high level view of the contents of two or more selected Asset Snapshots. Users will be able to choose to report on everything, differences only or similarities only and then save the report in a CSV, HTML or PDF file format.

To access the Asset Comparison report, follow the instructions below:

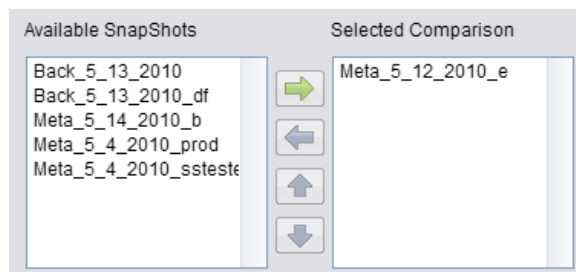
- A. Go to the Asset Snapshot
- B. Click on the Options Menu
- C. Select the Generate Comparison Report option



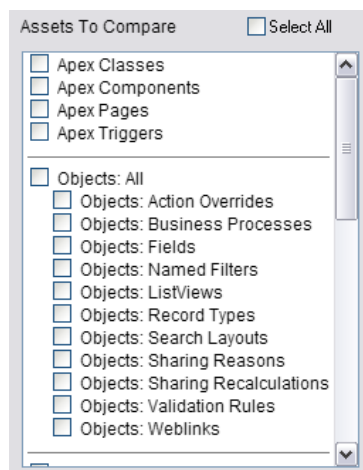
D. Once selected, the Generate Asset Comparison Report dialog box will appear.



E. First, you must select the Asset SnapShots that you want to compare from the Available SnapShots box in the top left corner of the dialog and then click the green arrow to move them to the Selected Comparison box.



F. Next, on the right side of the screen, select the Assets that you want to include in the report. You can choose individual assets, complete sections or select all assets by checking the appropriate check box. Note: Checking the Objects: All check box will only display the differences of all object metadata and not specific differences.



G. Next, select what you want to be displayed from the following options:

What To Show:

- Show Everything
- Show Differences
- Show Similarities

H. Then select the File Format that you want to export the report in from the following options:

Export File Format:

- CSV
- HTML
- PDF

Portrait Landscape

Expand Page If Needed

I. Once you have selected your desired file format, simply click the Generate button at the bottom of the dialog box to start the report creation.

Generate

You will be able to see the progress of the report generation by looking at the progress bar located above the generate button.

Progress:

2. Product Support:

The purpose of this document is to highlight the new Asset Comparison Report. Please direct all questions to DreamFactory Support at one of the following Support Options.

Live Chat – You can initiate a Live Chat with one of our Success Engineers by simply clicking on the Support Menu and selecting the Live Chat option.

Phone Support – You can contact our Support Engineers by phone at 1-877-577-3453 or by selecting the Phone Support option from the Support Menu.

Email Support – You can also email DreamFactory Support at support@dreamfactory.com.

Support Wiki – You can access additional information by accessing the DreamFactory Support Wiki online at <http://dreamfactory.pbworks.com/SnapShot>.

DreamFactory Support is available 5:00 AM until 5:00 PM PST (8:00 AM – 8:00PM EST) M-F.