

SnapShot Feature Release Notes

These release notes support the addition of the Delete Assets and Delete Folder Based Assets features that have been added to the Asset Snapshot. These two new features allow users to delete multiple assets and multiple folder based assets directly in the Asset Snapshot.

Contents:

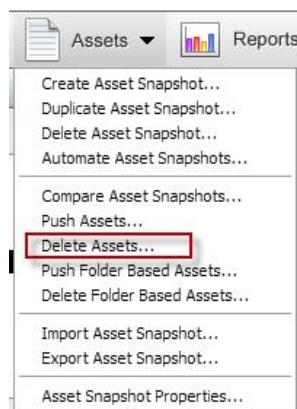
1. Overview of Delete Assets Feature
2. Overview of Delete Folder Based Assets Feature
3. Product Support

1. Overview of the Delete Assets Feature

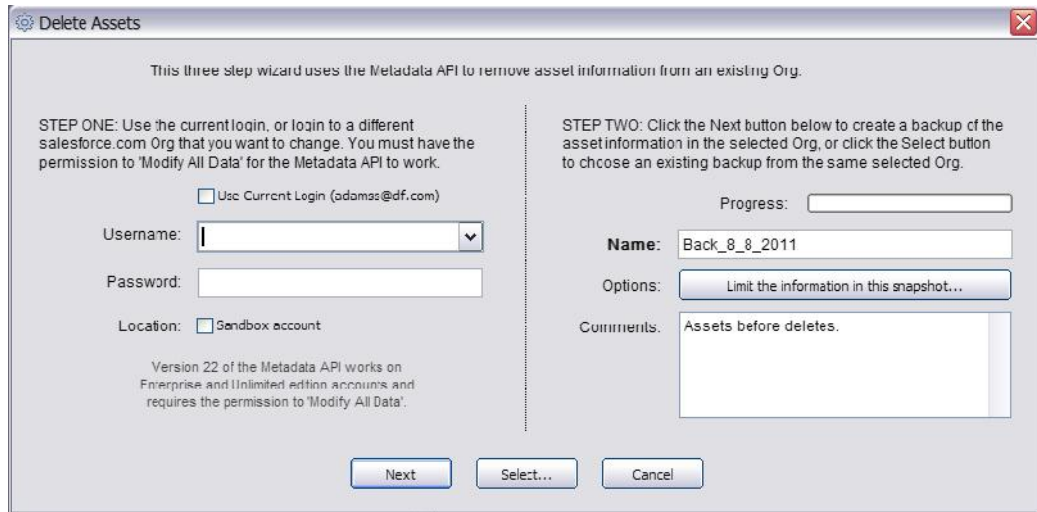
The new Delete Assets feature has been released and added to the Asset Snapshot. This feature allows users to easily delete multiple assets from their Org, directly in the Asset Snapshot. This feature is accessible through the Assets Menu.

To access the Delete Asset feature:

1. Click on the Assets Menu and select the Delete Assets command

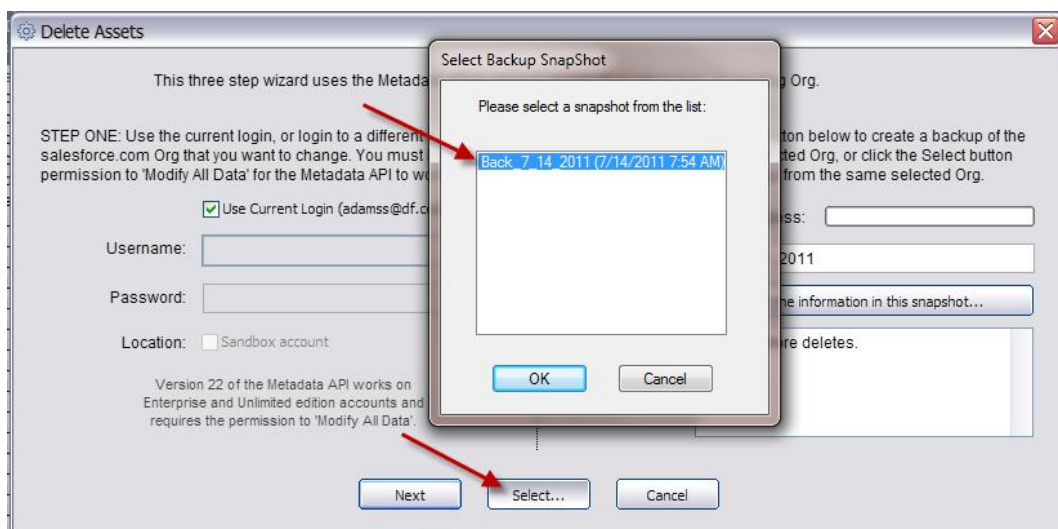


- Once selected, the Delete Assets login dialog box will appear. Similar in appearance to the Push Asset Snapshot login screen, here users can either login to the Org that they want to delete assets from, or use the current login. If the user wants to use the Current Login, they must check the check box above the login boxes and everything else will be grayed out.

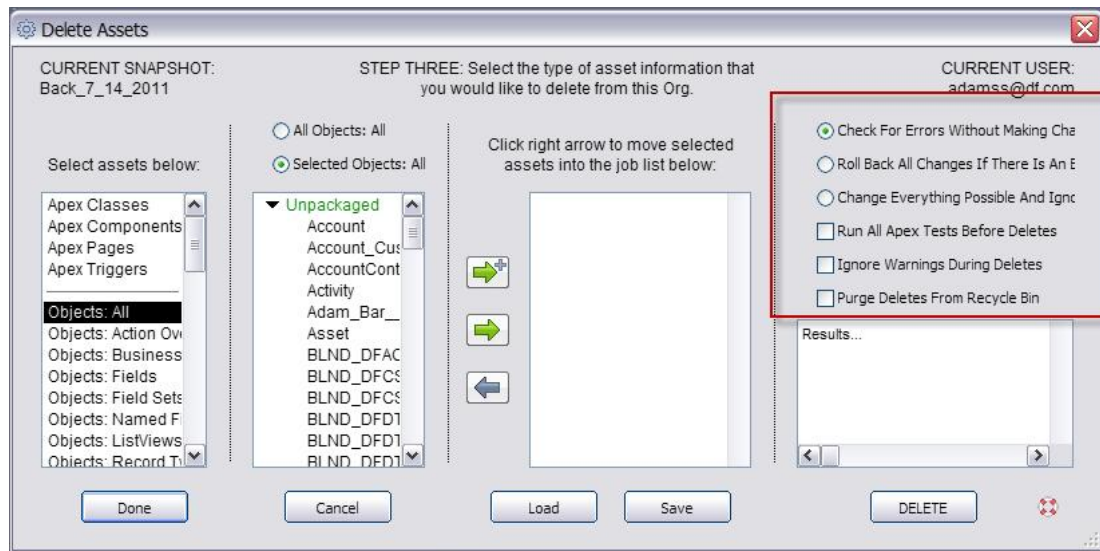


- Once the user chooses their login option, they are prompted to either capture a backup snapshot of the destination org or select from a previously taken backup snapshot of the destination Org. **Note:** Users can restrict the contents of the backup snapshot if they wish by clicking on the Limit the information in this snapshot button.

If the user decides to use an existing backup snapshot, they must click the select button and then select the backup snapshot from the Select Backup Snapshot dialog box.

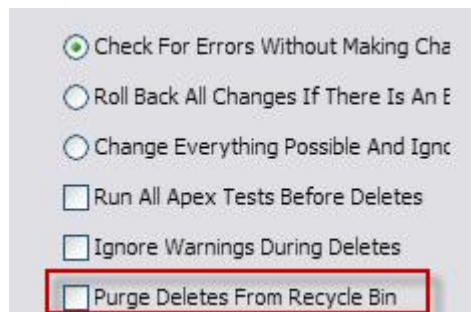


4. Once the user has taken the backup snapshot, the Delete Assets dialog box will appear. Similar in appearance of the Push Asset snapshot dialog, the user must select the assets that they want to delete and then add them to the job list. Once added, they can save the job list as usual.



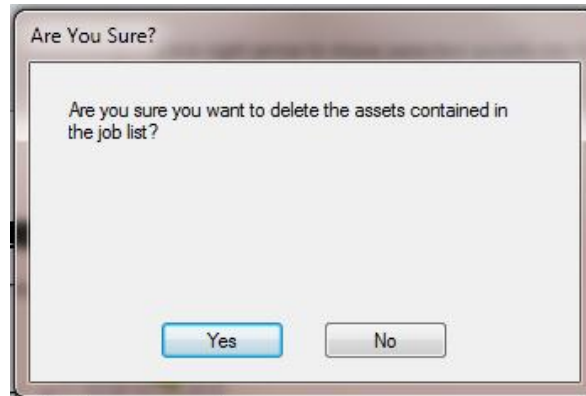
Note: Profiles and Custom Object Translations sub-elements have been removed from the dialog due to the Metadata API not supporting the ability to remove these sub-elements.

The push options are similar to the Push Asset Snapshot dialog except for deleting instead of pushing. One additional push option was added replacing the Data transform option. Now, users can purge deletes from Recycle Bin if they wish.



The reference to the Recycle Bin is not relating to the standard Salesforce recycle bin, but a separate Snapshot recycle bin. Selecting this option will permanently delete the asset from your Org. If a user deletes a field but does not select the Purge Deletes option, they will be able to see the deleted field underneath the custom field section in the Custom Object details in Salesforce setup.

5. Prior to performing an actual push to delete the select assets, users will be prompted to confirm the are sure that they want to delete the selected assets by clicking yes on the Are You Sure pop up dialog.



6. Once the user clicks the Yes button, the selected asset will be deleted.

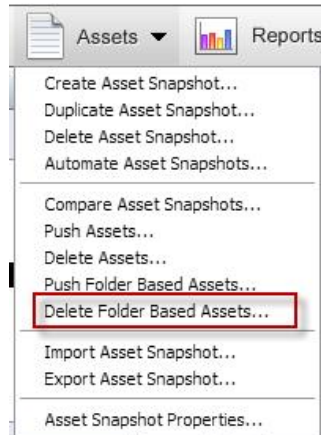
Note: All deletes are captures in the Snapshot Administrative Logger feature similar to the push results. In addition, Delete Assets also assumes the same push permissions as the Push Asset Snapshot permissions.

2. Overview of the Delete Folder Based Assets

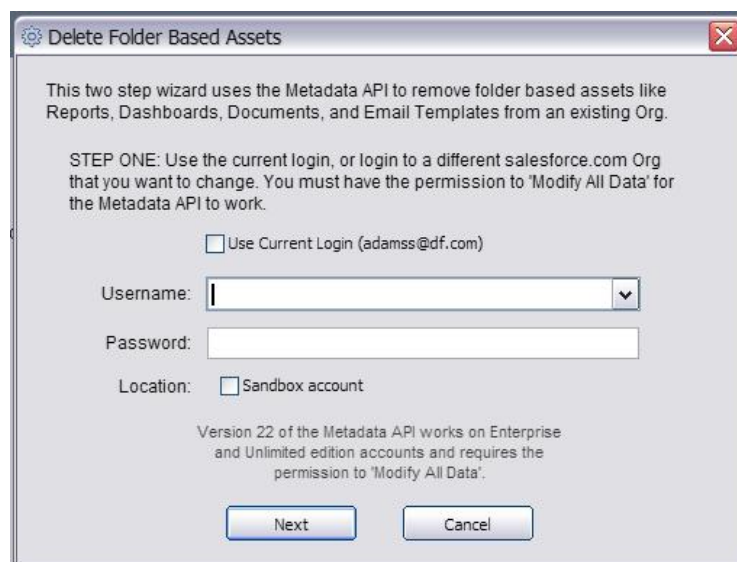
The new Delete Folder Based Assets feature has been released and added to the Asset Snapshot. This feature allows users to easily delete multiple Folder Based Assets from their Org, directly in the Asset Snapshot. This feature is accessible through the Assets Menu.

To access the Delete Folder Based Asset feature:

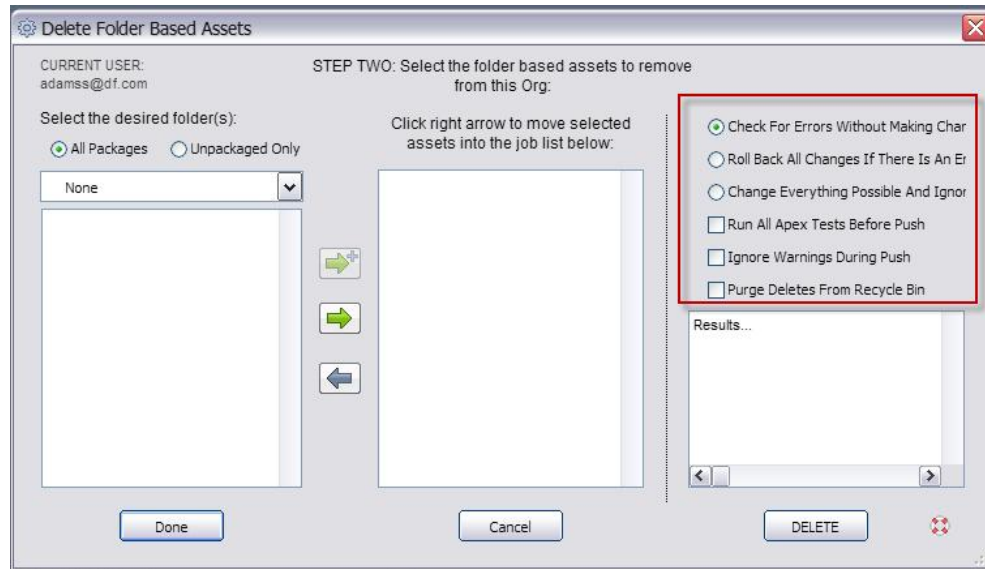
1. Click on the Assets Menu and select the Delete Folder Based Assets command



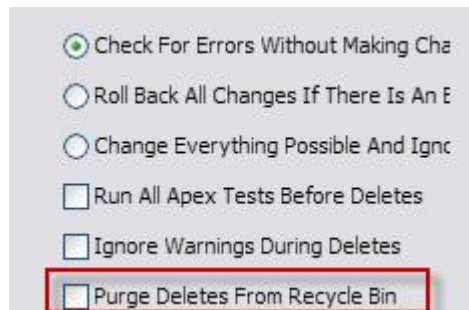
2. Once selected, the Delete Folder Based Assets login dialog box will appear. Similar in appearance to the Push Asset Snapshot login screen, here users can either login to the Org that they want to delete assets from, or use the current login. If the user wants to use the Current Login, they must check the check box above the login boxes and everything else will be grayed out. Click next to login.

A screenshot of a dialog box titled 'Delete Folder Based Assets'. The dialog box contains the following text: 'This two step wizard uses the Metadata API to remove folder based assets like Reports, Dashboards, Documents, and Email Templates from an existing Org.' Below this, it says 'STEP ONE: Use the current login, or login to a different salesforce.com Org that you want to change. You must have the permission to 'Modify All Data' for the Metadata API to work.' There are three input fields: a checkbox labeled 'Use Current Login (adamss@df.com)', a 'Username:' field with a dropdown arrow, and a 'Password:' field. Below these is a 'Location:' field with a checkbox labeled 'Sandbox account'. At the bottom, there is a note: 'Version 22 of the Metadata API works on Enterprise and Unlimited edition accounts and requires the permission to 'Modify All Data''. At the very bottom are two buttons: 'Next' and 'Cancel'.

- Once the user has logged in to the Delete Folder Based Assets dialog, the Delete Folder Based Assets dialog box will appear. Similar in appearance of the Push Folder Based Asset snapshot dialog, the user must select the assets that they want to delete and then add that selected asset to the destination box.

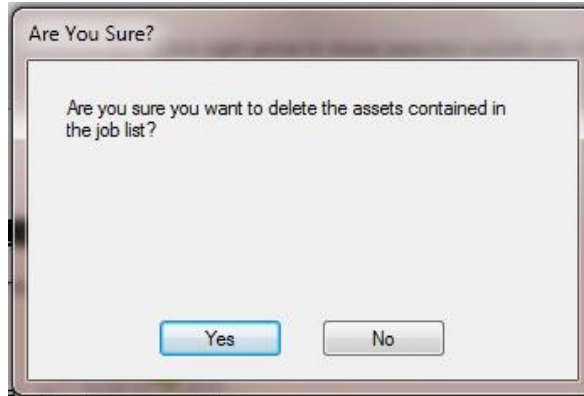


The push options are similar to the Push Asset Snapshot dialog except for deleting instead of pushing. One additional push option was added replacing the Data transform option. Now, users can purge deletes from Recycle Bin if they wish.



Unlike the Delete Assets feature discussed above, the reference to the Recycle Bin in the Delete Folder Based Assets feature is related to the standard Salesforce recycle bin.

4. Prior to performing an actual push to delete the select assets, users will be prompted to confirm the are sure that they want to delete the selected assets by clicking yes on the Are You Sure pop up dialog.



5. Once the user clicks the Yes button, the selected asset will be deleted.

Note: All deletes are captures in the Snapshot Administrative Logger feature similar to the push results. In addition, Delete Folder Based Assets also assumes the same push permissions as the Push Asset Snapshot permissions.

3. Product Support:

The purpose of this document is to highlight the new Delete Assets and Delete Folder Based Assets features. Please direct all questions to DreamFactory Support at one of the following Support Options.

Live Chat – You can initiate a Live Chat with one of our Success Engineers by simply clicking on the Support Menu and selecting the Live Chat option.

Phone Support – You can contact our Support Engineers by phone at 1-877-577-3453 or by selecting the Phone Support option from the Support Menu.

Email Support – You can also email DreamFactory Support at support@dreamfactory.com.

Support Wiki – You can access additional information by accessing the DreamFactory Support Wiki online at <http://dreamfactory.pbworks.com/SnapShot>.

DreamFactory Support is available 5:00 AM until 5:00 PM PST (8:00 AM – 8:00PM EST) M-F.