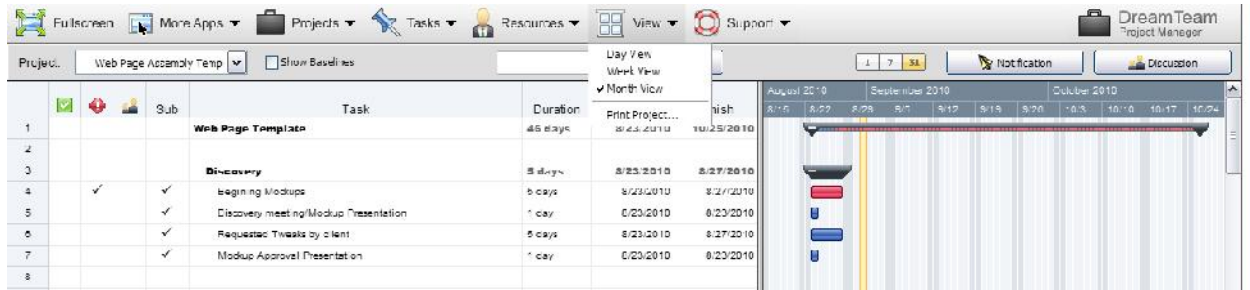


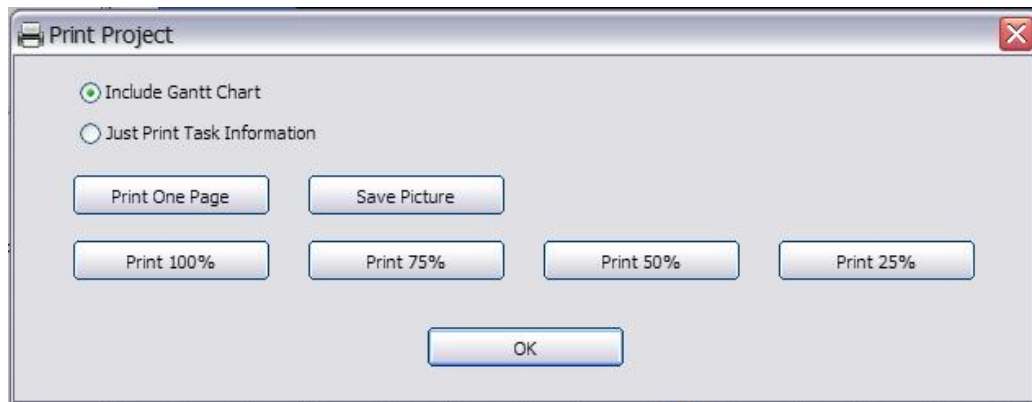
# DreamTeam Suite Printing Options

This document outlines the printing options available within the DreamTeam Suite.

Located in the View Menu drop down on the Project Manager, the Print Project option provides users with a number of options to bring their project data out visually.



Selecting the Print Project menu opens the Project Print & Export dialog box. Here users can select from the following options:



**Print One Page** – Selecting this option will print the project out in one page.

**Print 100%** - This option allows users to print the project full size on multiple pages.

**Print 75%** - This option allows users to print the project at  $\frac{3}{4}$  size on multiple pages. This option requires the latest version of the DreamFactory player.

**Print 50%** - This option allows users to print the project at  $\frac{1}{2}$  size on multiple pages. This option requires the latest version of the DreamFactory player.

**Print 25%** - This option allows users to print the project at  $\frac{1}{4}$  size on multiple pages. This option requires the latest version of the DreamFactory player.

**Save Picture** – Selecting the Save Picture option enables the user to save the project as a JPEG, BMP, GIF or Photoshop file which can then be added to an email or a PowerPoint.

