

DreamTeam New Feature Release Notes

This document highlights new features that have recently been added to the DreamTeam Suite.

Contents

1. New Feature Overview
2. Product Support

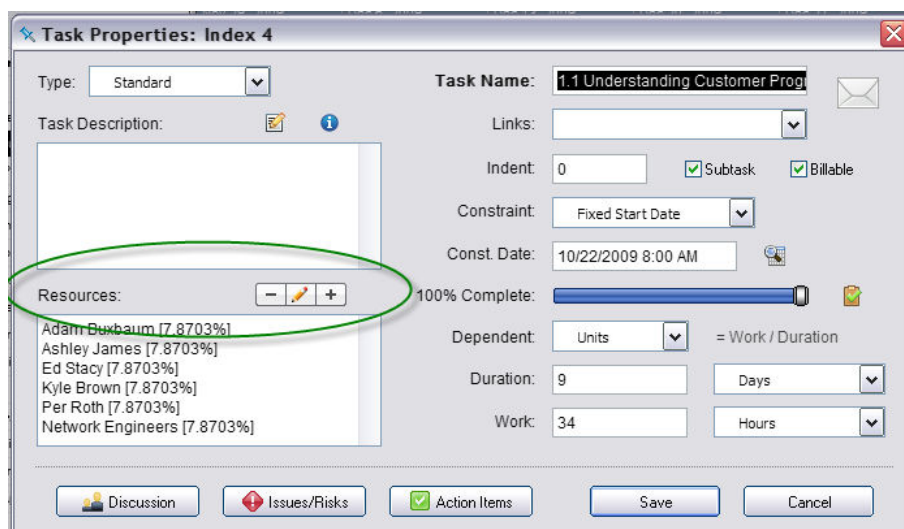
1. New Feature Overview

The following new features have been added to the Project Manager application:


- A. New Resource Allocation control added to the Task Properties
- B. Events have been added to the Micro Level Resource Availability Calendar accessible through the Task Properties

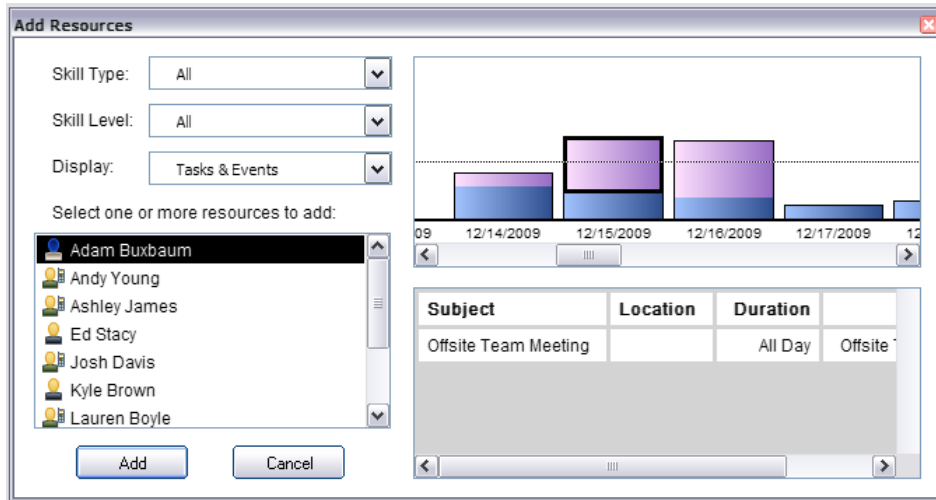
A. New Resource Allocation control added to the Task Properties


The Resource Allocation control on the Task Properties has been updated, now providing you with the ability to add, edit and remove resources that are assigned to tasks. Previously, through the Task Properties, you were only able to add resources to a task by clicking on the Add button directly above the resource box on the left hand side of the Task Properties. The Add button has been replaced with a new control that is displayed in the screen shot below.




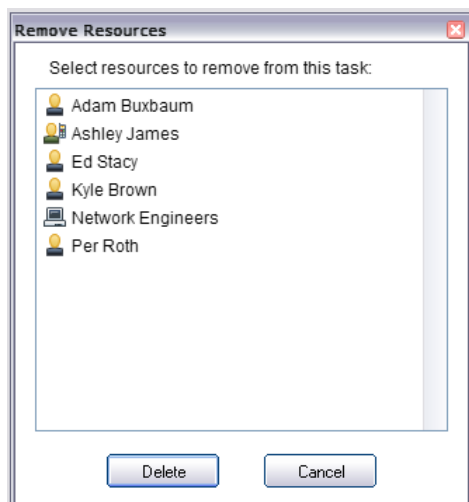
The new resource allocation control consists of three buttons that enable you to do the following:

Add Resources – By clicking on the , the Add Resource dialog box will open. The Add Resources dialog box is where you select which resources you want to allocate to the task. It also displays the Micro Level Resource Availability Calendar that enables you to see the selected resources availability for the next 60 days.



Edit Resources – By clicking on the , this enables you to edit the existing resources that are assigned to the task.

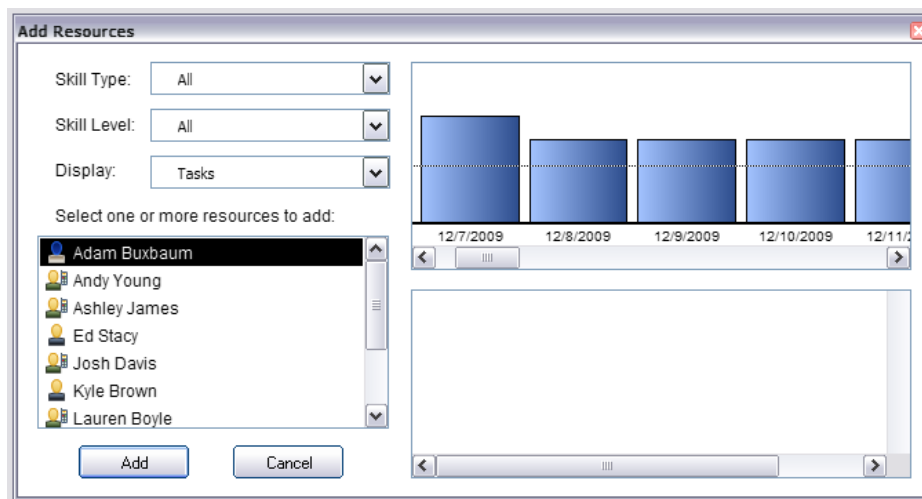
Remove Resources – By clicking on the , this enables you to remove resources from the task. Once selected, the Remove Resources dialog box will appear. To remove a resource from the task simply select the desired resource and click the Delete button.



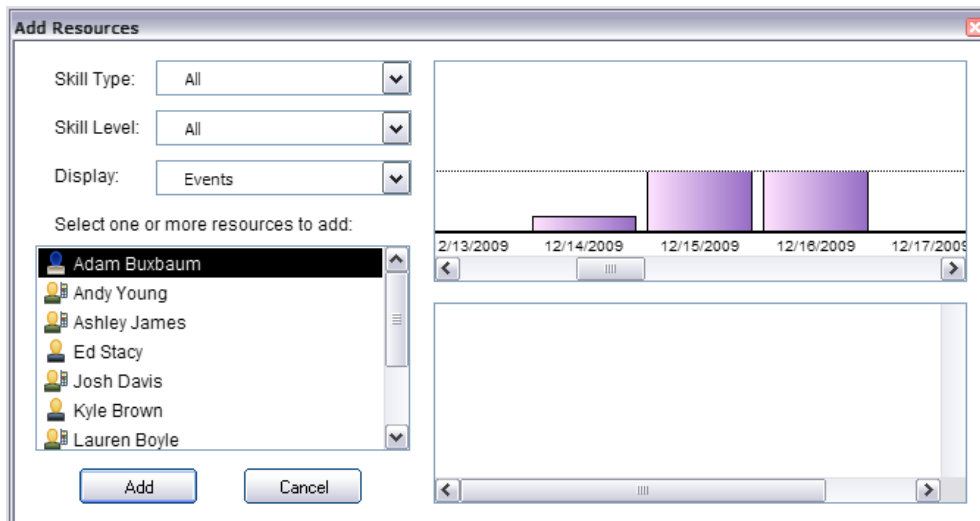
B. Events have been added to the Micro level Resource Availability Calendar accessible through the Task Properties

You are now able to see any events that are assigned to a specific resource in the Micro Level Resource Availability Calendar in the Add Resources dialog box. A drop down menu has been added to the Add Resources dialog box will allows you to change the display of the Micro Level Resource Availability Calendar. The drop down menu enables you to choose from the following options:

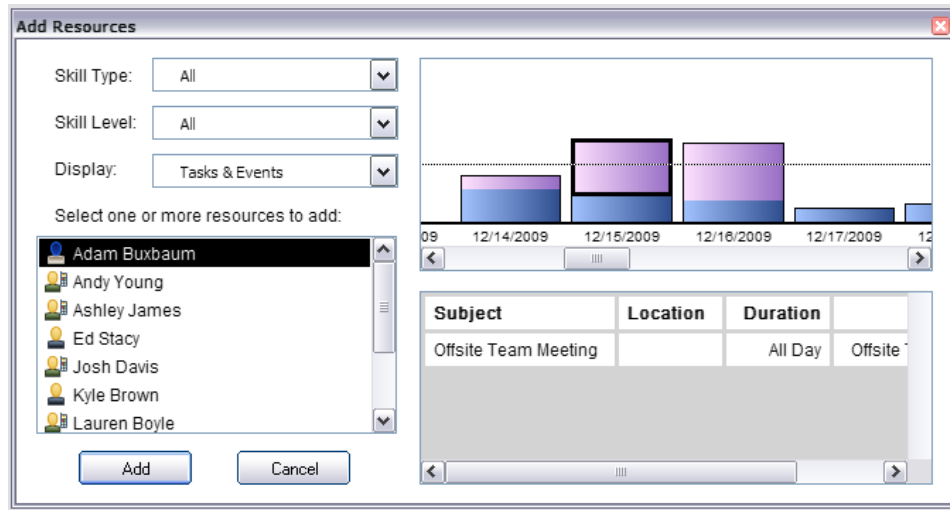
Tasks – By selecting Tasks, the Micro Level Resource Availability Calendar will only display the project tasks that the select resource has been assigned to. All project tasks are displayed in blue.



Events – By selecting Events, the Micro Level Resource Availability Calendar will only display the events that the select resource has been assigned to. All events are displayed in purple.



Tasks and Events - By selecting Tasks and Events, the Micro Level Resource Availability Calendar will display both the project tasks and the events that the select resource has been assigned to. All project tasks will be displayed in blue, while all events will be displayed in purple. If a resource has been assigned both project tasks and events, the projects tasks will be on the bottom and the events will be stacked on top. This way to see which projects tasks the resource has been assigned to simply click on the blue box, while to see the events click on the purple box.



2. Product Support

For additional information regarding this new feature or other DreamTeam features please contact DreamFactory Support through one of the following support options:

Live Chat – You can initiate a Live Chat with one of our Success Engineers by simply clicking on the Support Menu and selecting the Live Chat option.

Phone Support – You can contact our Support Engineers by phone at 1-877-577-3453 or by selecting the Phone Support option from the Support Menu.

Email Support – You can also email DreamFactory Support at support@dreamfactory.com.

Support Wiki – You can access additional information by accessing the DreamFactory Support Wiki online at <http://dreamfactory.pbworks.com/SnapShot>.

DreamFactory Support is available 5:00 AM until 5:00 PM PST (8:00 AM – 8:00PM EST) M-F.