

DreamTeam Feature Release Notes

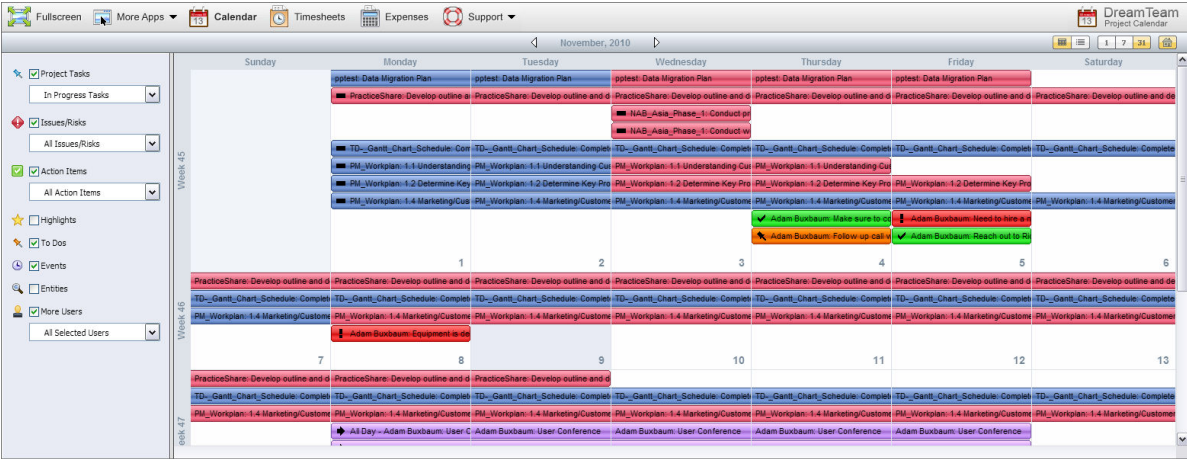
These release notes support the new enhancements made to the Project Calendar including: Issues & Risks and Action Item picklists on the Calendar, total bar and date display on the Timesheet Menu.

Contents:

- 1. Overview of the Project Calendar Enhancements
- 2. Overview of the Timesheet Menu Enhancements
- 3. Product Support

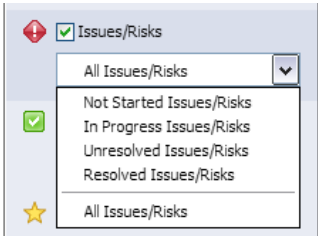
1. Overview of the Project Calendar Enhancements

The DreamTeam Project Calendar now enables users to select certain Issues & Risks and Action Items from a picklist and display them on their Project Calendar.



The following drops down menus have been added to the calendar in the left hand legend panel:

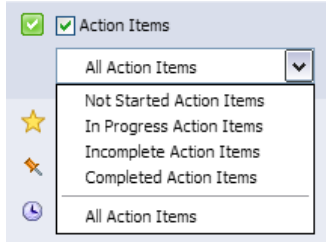
Issues & Risks – Now users can choose to display one of the following options on their Project Calendar regarding their Issues & Risks:



- Not Started Issues/Risks
- In Progress Issues /Risks

Unresolved Issues/Risks
Resolved Issues/Risks
All Issues/Risks

Action Items - Now users can choose to display one of the following options on their Project Calendar regarding their Action Items:



Not Started Action Items
In Progress Action Items
Incomplete Action Items
Completed Action Items
All Action Items

2. Overview of the Timesheet Menu Enhancements

The Timesheet Menu on the Project Calendar has also received two new enhancements including a Totals Bar and a date hover over. Now Users can easily see the total amount of time that they have entered by day by looking at the gray bar that has been added to the bottom of the entry screen. Users can also see totals for the time period as well. In addition, if a User hovers their mouse over a particular day, the full calendar date will appear.

A screenshot of the Timesheet Menu interface. The table displays timesheet entries for a project, with columns for Project, Task, Resource, Completed status, and days of the week (Sun, Mon, Tue, Wed, Thu, Fri, Sat). A gray bar at the bottom shows the total time entered for each day. A red arrow points to the date 'November 9, 2010' in the calendar header, and another red arrow points to the 'Total' row in the table.

Project	Task	Resource	Completed	Sun	Mon	Tue	Wed	Thu	Fri	Sat	Total
NAB_Asia_Phase_1	Conduct reqmts workshop	Adam Buxbaum	<input type="checkbox"/>								0:00
PM_Workplan	1.3 Collateral Strategy	Adam Buxbaum	<input type="checkbox"/>		8:00	8:00	8:00	8:00	8:00		40:00
ppetest	1.4 Marketing/Customer Acquisition St...	Adam Buxbaum	<input type="checkbox"/>								0:00
ppetest	Integration Plan	Adam Buxbaum	<input type="checkbox"/>		2:00						2:00
TD_-_Gantt_Chart_Schedule	Complete system engineering documenta...	Adam Buxbaum	<input type="checkbox"/>								0:00
Total					10:00	8:00	8:00	8:00	8:00		42:00

3. Product Support:

The purpose of this document is to highlight the new enhancements made to the Project Calendar. Please direct all questions to DreamFactory Support at one of the following Support Options.

Live Chat – You can initiate a Live Chat with one of our Success Engineers by simply clicking on the Support Menu and selecting the Live Chat option.

Phone Support – You can contact our Support Engineers by phone at 1-877-577-3453 or by selecting the Phone Support option from the Support Menu.

Email Support – You can also email DreamFactory Support at support@dreamfactory.com.

Support Wiki – You can access additional information by accessing the DreamFactory Support Wiki online at <http://dreamfactory.pbworks.com/SnapShot>.

DreamFactory Support is available 5:00 AM until 5:00 PM PST (8:00 AM – 8:00PM EST) M-F.