

DreamTeam Feature Release Notes

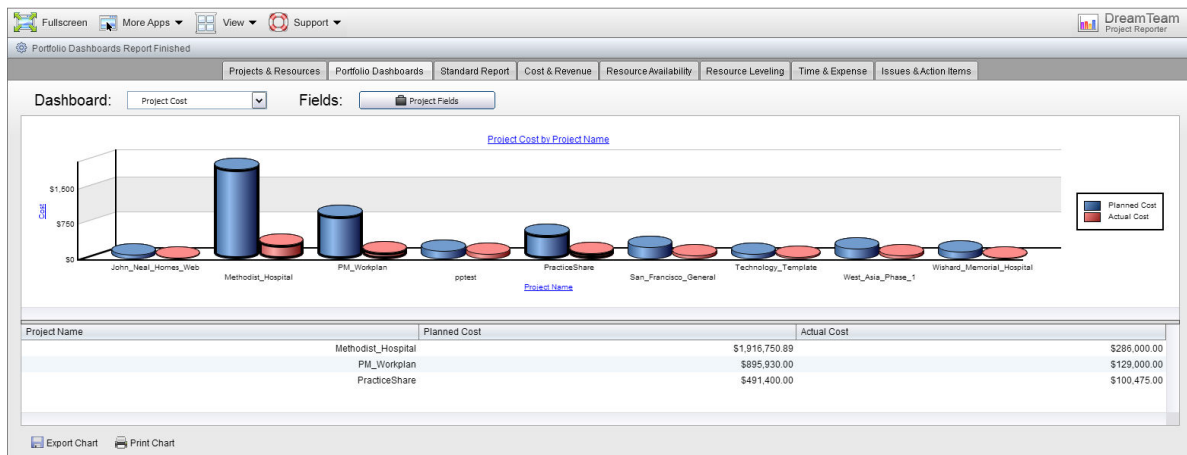
These release notes support the new Portfolio Dashboard Reports added to the DreamTeam Project Reporter.

Contents:

1. Overview of the new Portfolio Dashboard Reports
2. Product Support

1. Overview of the new Portfolio Dashboard Reports

Nine new DreamTeam Portfolio Dashboards have been added to the DreamTeam Project Report.

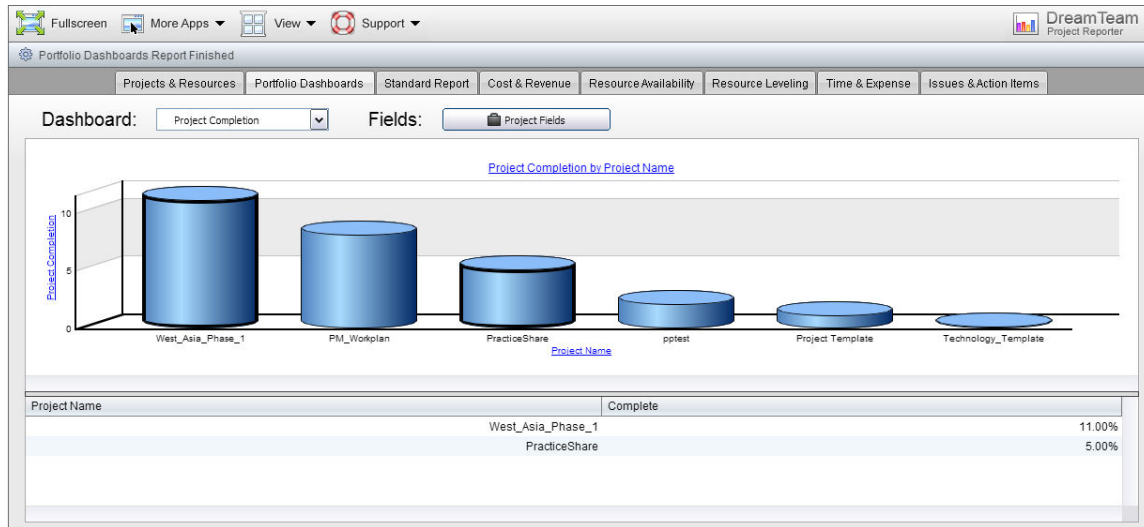


These nine Portfolio Dashboards include the following. Details regarding each dashboard are below.

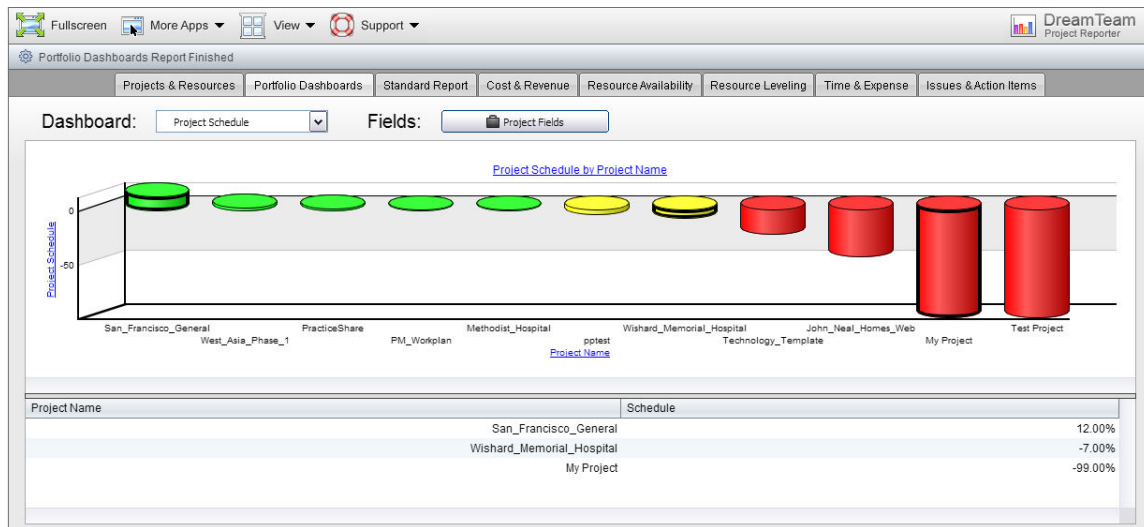
- Project Completion
- Project Schedule
- Project Revenue
- Project cost
- Project Profit
- Project Hours
- Issue Status
- Risk Status
- Action Items Status

The dashboard allows users to view data by clicking on specific projects. All results are displayed in the table at the bottom of the dashboard. Hold the control key to select multiple projects.

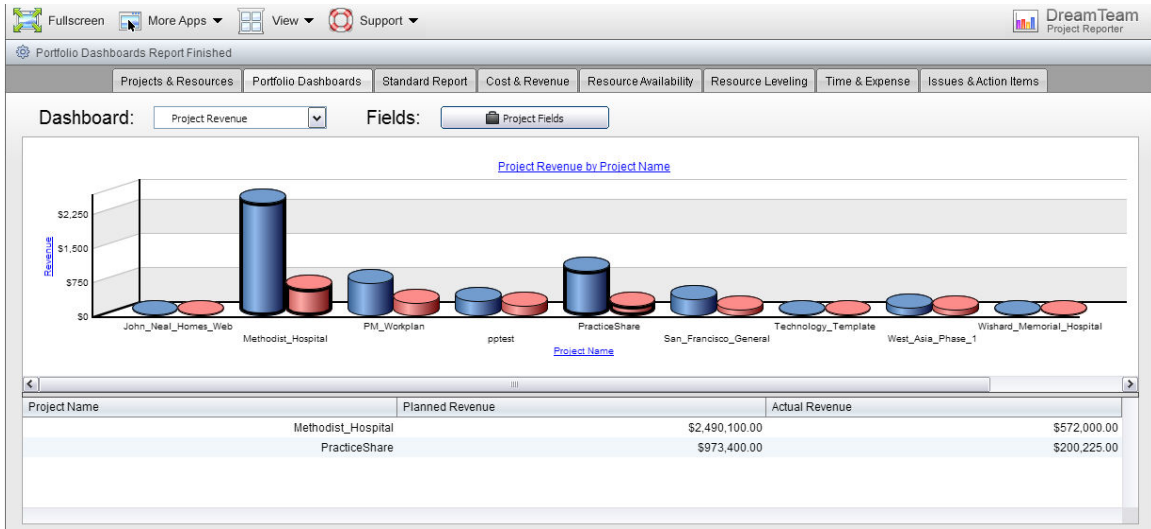
Project Completion – This report displays the completion percentage for your entire portfolio.



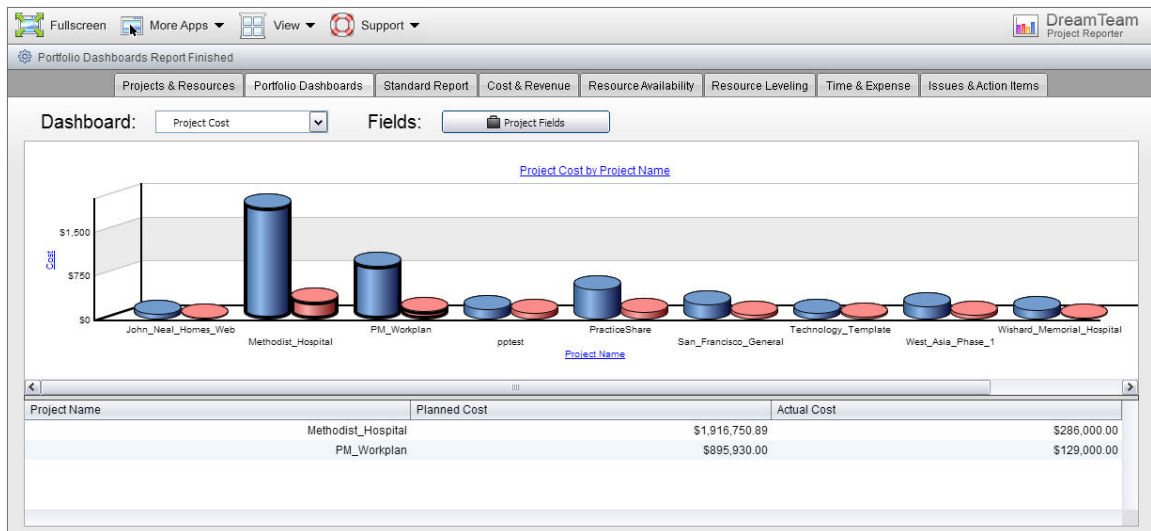
Project Schedule – This report displays the project schedule for your portfolio. Green indicates that the project is ahead of schedule. Yellow indicates that the project is either a little ahead or a little behind schedule. While red indicates that the project is behind schedule.



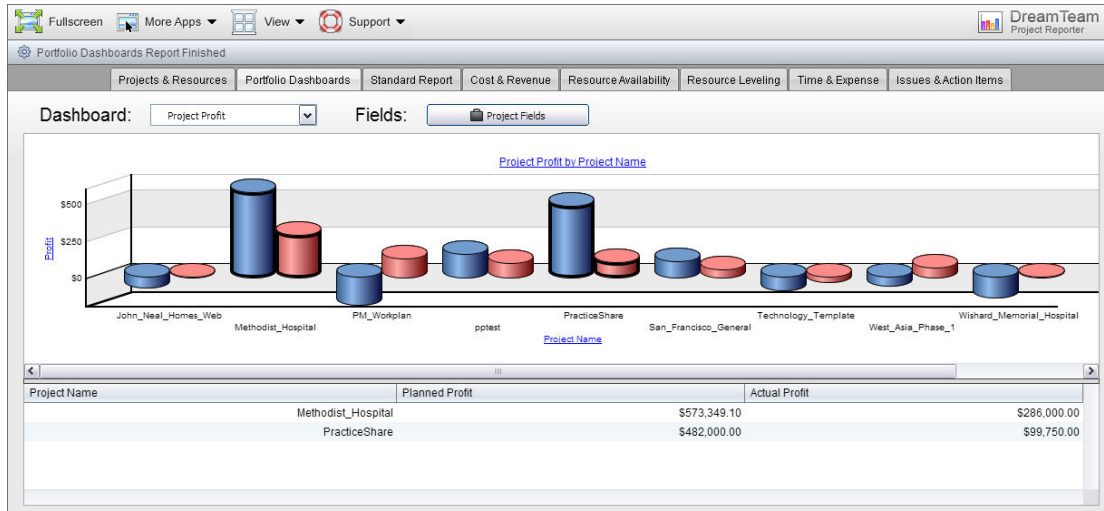
Project Revenue – This report displays the planned revenue and actual revenue for your entire portfolio. Blue displays Planned Revenue. Red displays Actual Revenue.



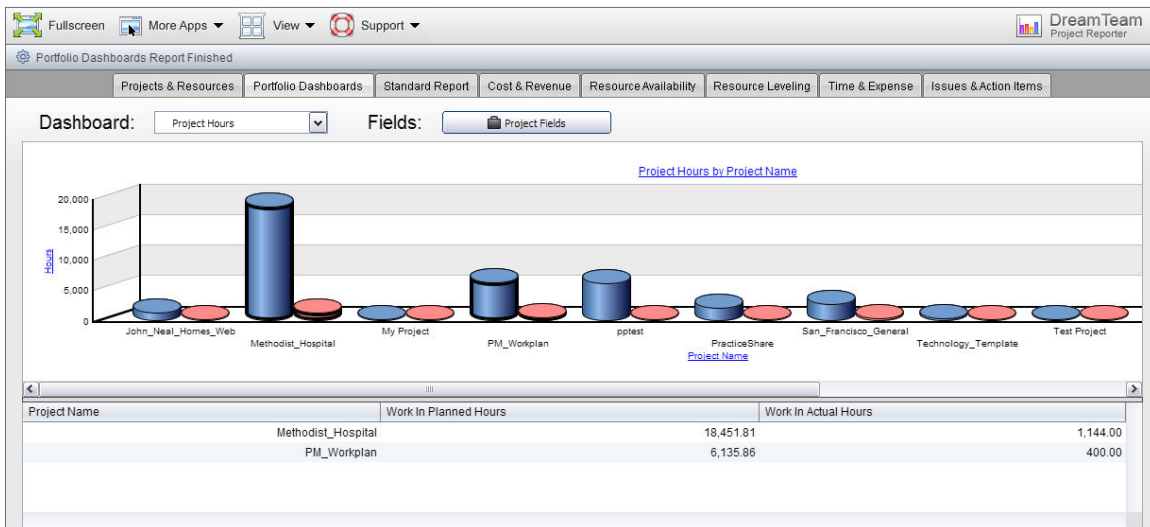
Project Cost – This report displays the planned cost and actual cost for your entire portfolio. Blue displays Planned Cost. Red displays Actual Cost.



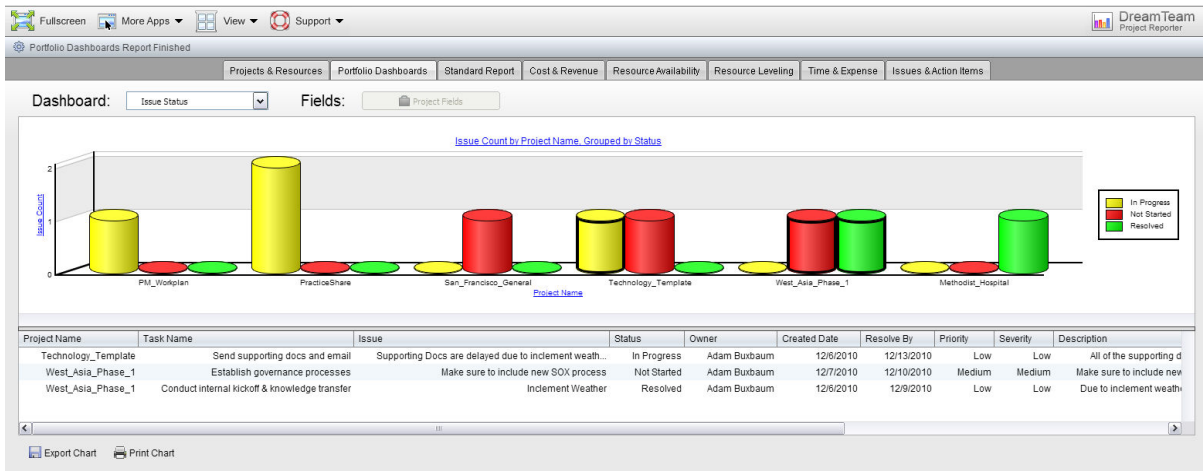
Project Profit – This report displays the planned profit and actual profit for your entire portfolio. Blue displays Planned Profit. Red displays Actual Profit.



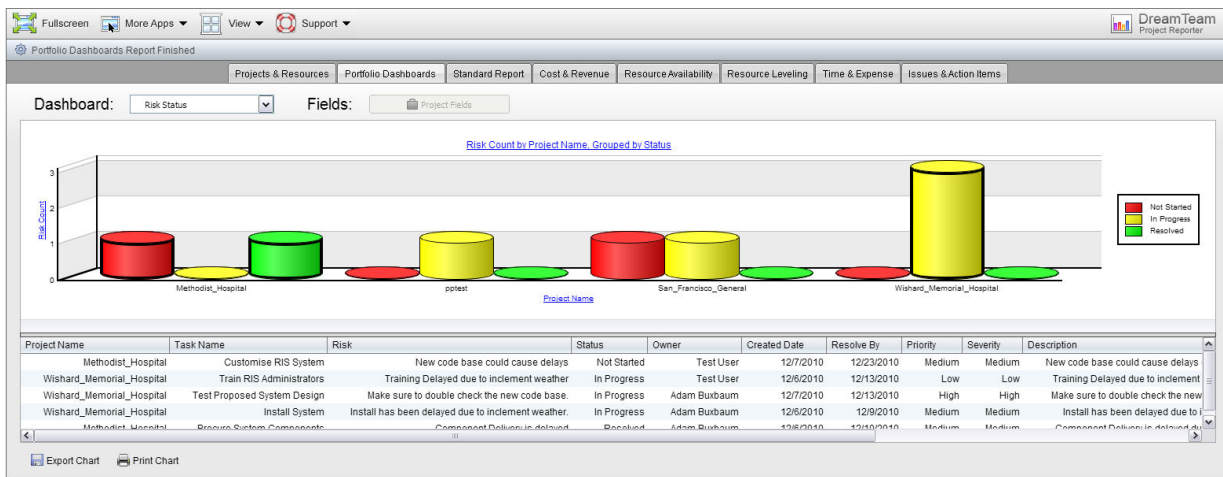
Project Hours – This report displays the planned and actual hours for your entire portfolio. Planned hours are calculated from task duration on the Gantt chart, while actual hours are calculated based on time entered into the Time & Expense module. Blue means Planned Hours. Red means Actual Hours.



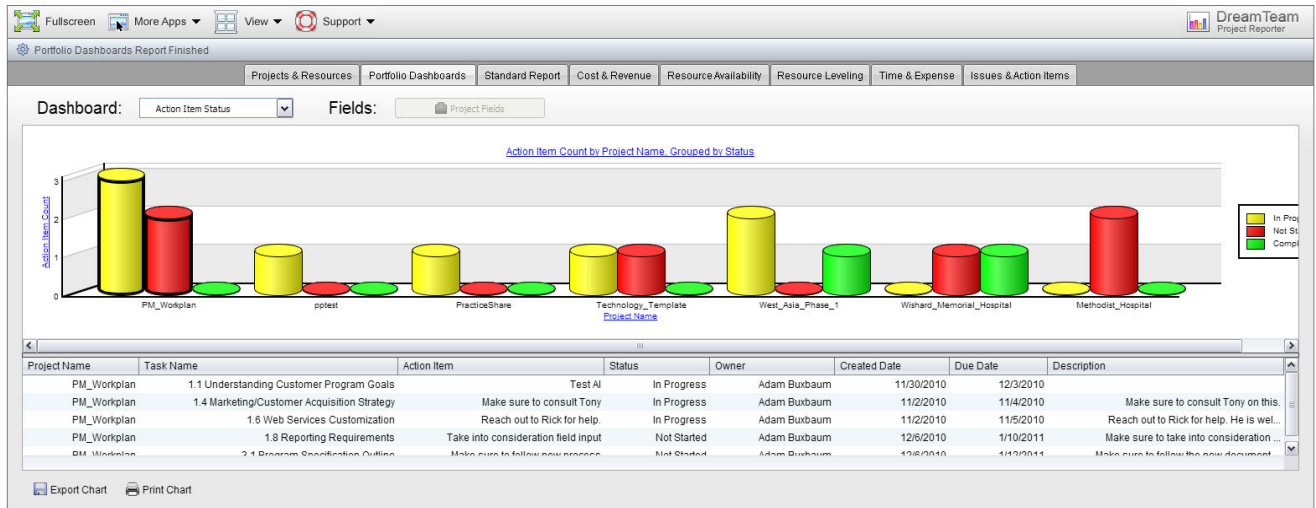
Issue Status – This report displays the status of the issues for your entire portfolio. Green means that the issue has been resolved. Yellow means that the issue is in process. Red means that the issue has not started as of yet.



Risk Status – This report displays the status for the risks for your entire portfolio. Green means that the issue has been resolved. Yellow means that the issue is in process. Red means that the issue has not started as of yet.



Action Item Status – This report displays the status of the action items for your entire portfolio. Green means that the issue has been resolved. Yellow means that the issue is in process. Red means that the issue has not started as of yet.



2. Product Support

The purpose of this document is to highlight the new sorting options made to the Project Calendar List View. Please direct all questions to DreamFactory Support at one of the following Support Options.

Live Chat – You can initiate a Live Chat with one of our Success Engineers by simply clicking on the Support Menu and selecting the Live Chat option.

Phone Support – You can contact our Support Engineers by phone at 1-877-577-3453 or by selecting the Phone Support option from the Support Menu.

Email Support – You can also email DreamFactory Support at support@dreamfactory.com.

Support Wiki – You can access additional information by accessing the DreamFactory Support Wiki online at <http://dreamfactory.pbworks.com/SnapShot>.

DreamFactory Support is available 5:00 AM until 5:00 PM PST (8:00 AM – 8:00PM EST) M-F.