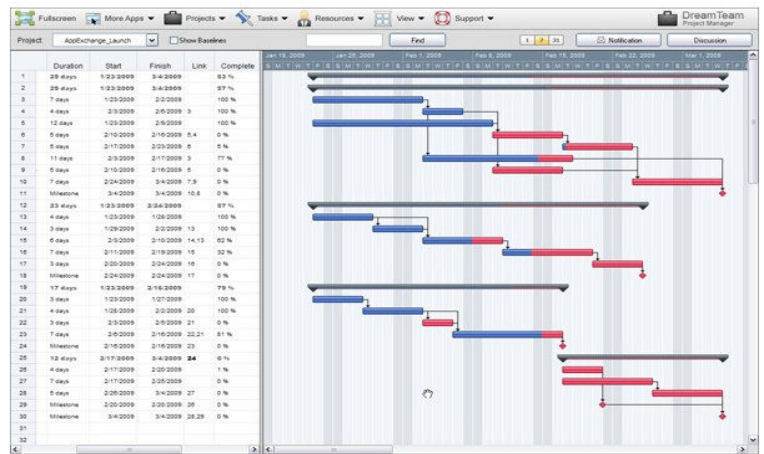


## DreamFactory Suite: The Ultimate teamware & power tools suite to maximize Force.com

DreamFactory's Unlimited Edition offers a fully integrated suite of native applications for customizing, managing, and collaborating in Force.com. The suite is discounted to encourage site wide use, extending the benefits of your Force.com implementation to all departments with modules for Project & Document Collaboration, Advanced Reporting & Analysis, Performance Tracking, Visual App Studio, and Change & Release Management.

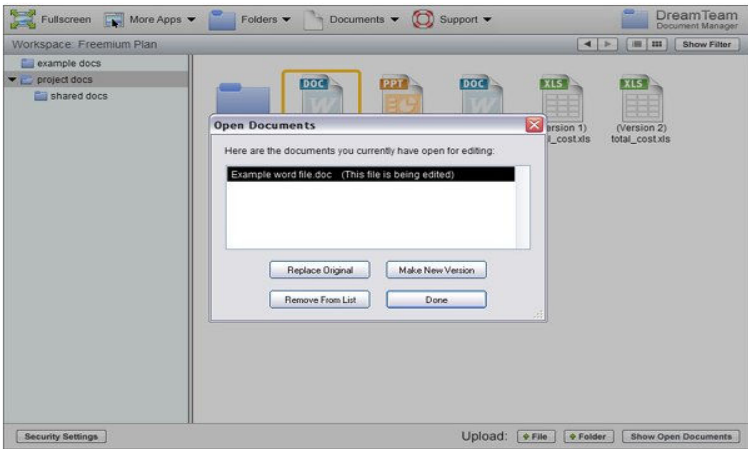
### Enterprise project & portfolio management

The DreamTeam Project Manager offers enterprise grade project management for Force.com. It's highly visual approach is ideal for professionals that require advanced project features including: Gantt charts, timesheets, expense reporting, resource allocation, advanced portfolio reporting and a host of other best-in-class capabilities. With Microsoft Project import, DreamTeam enables you to easily migrate projects to collaborative spaces in Force.com.



### Enterprise document collaboration

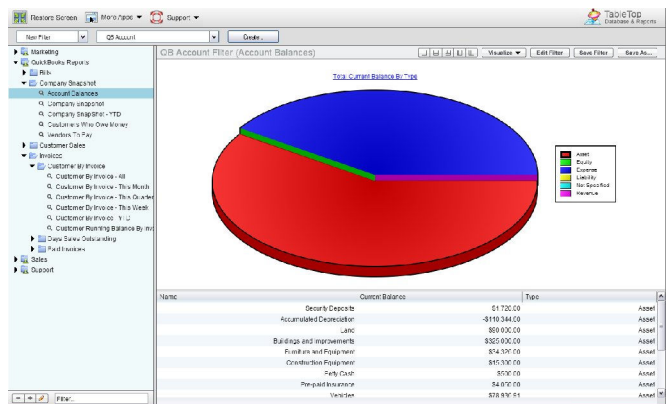
DreamTeam's Document Manager allows users to store and share documents with colleagues and partners securely in Force.com. It offers a "WebTop" for managing and launching virtual documents in a familiar desktop paradigm. Capabilities include versioning, desktop sync, and double click launch of virtual files using desktop applications.



### Advanced reporting & analysis

DreamTeam's TableTop creates powerful reports, detailed dashboards, and fully interactive performance trackers with a click of the mouse. Analyze your data with trending, exception reporting, merge views, and spreadsheet cell calculations. Share live reports with partners with a single click.

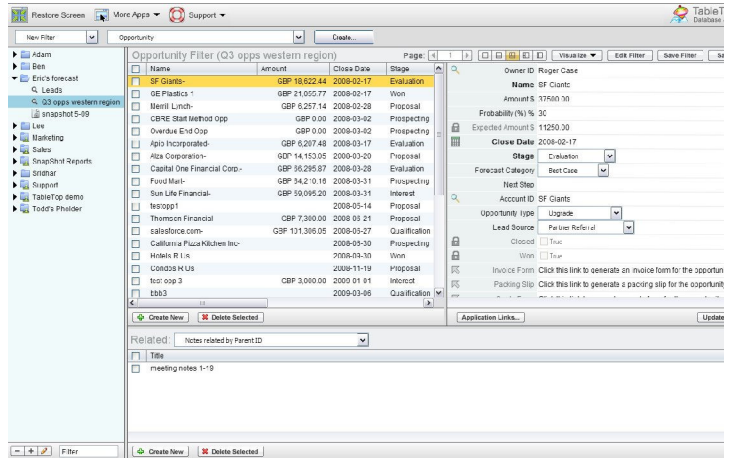
TableTop executes "in-cloud", preserving all data relationships, and eliminating issues resulting from moving data to other databases for processing.



## Collaborative performance tracking

TableTop features collaborative data input, writing directly to Force.com. Rapidly configure fully interactive data managers and save as live views to track key performance metrics. For example, executives can create an opportunity manager with team input in a few clicks.

TableTops excel loader allows you to instantly transform flat files into shared Force.com databases.



## Automate business engagement forms

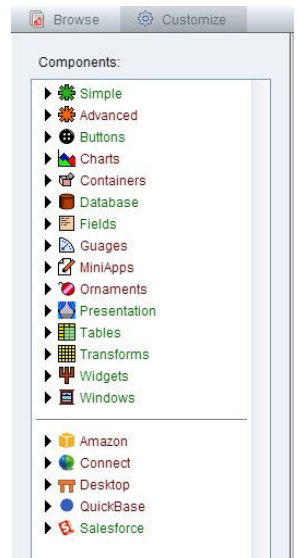
FormFactory Pro automates the deployment of rich forms in Salesforce.com that solicit data from your end users. Pro offers an extensive palette of graphical forms components and visual page navigation logic to enable drag and drop layout of live forms in Force.com.

Rapidly deliver fully interactive forms connected to Salesforce.com such as survey forms, quotes & order forms, account plans, employment applications, WYSIWYG input forms or any other data entry forms.

## Visual application studio

AppBuilder enables the creation of interactive forms based applications that can both read and write data across cloud databases. AppBuilder adds our innovative Mashup Manager™ to the layout editor, providing a visual programming model to connect components with application logic. Applications deployed in AppBuilder offer frictionless sharing regardless of whether they are inside of, or external to your org.

Create and share robust interactive applications across the enterprise with mini cloud db apps, partner/customer portals, sophisticated reports and dashboards, product configurators, and a host of other productivity applications native to Force.com.





## Maximize Force.com implementations with DreamFactory Suite

