

DreamTeam New Feature Release Notes

This document highlights new features that have recently been added to the DreamTeam Suite.

Contents

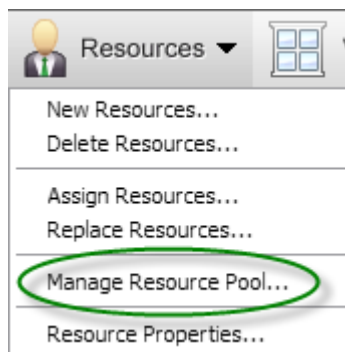
1. New Feature Overview
2. Product Support

1. New Feature Overview

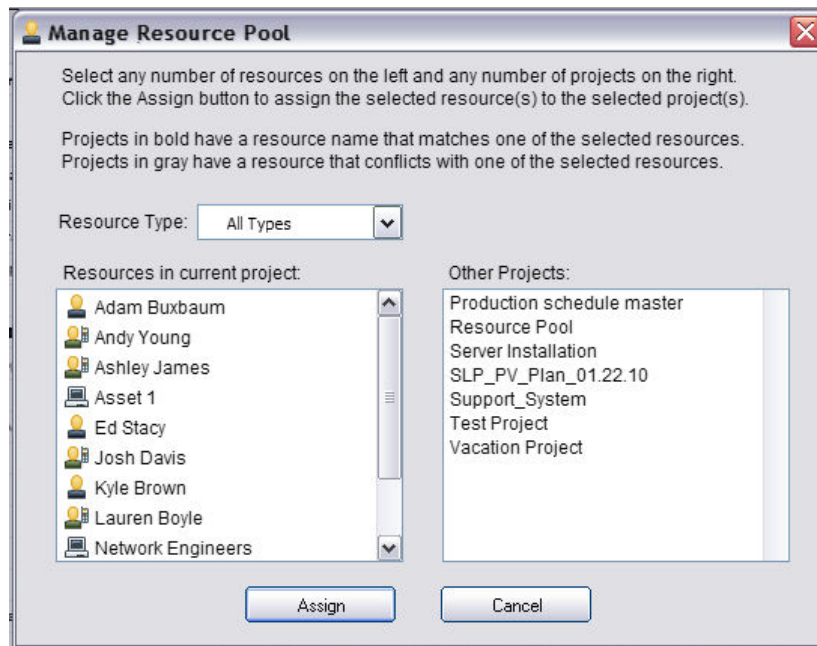
A. Ability to Easily Assign Resources to Multiple Projects

DreamTeam now allows Project Managers to easily manage their resources and assign them to multiple projects from one dialog box. The Manage Resource Pool command has been added to the Resource Menu. This feature allows you to easily select multiple resources (Users, Contacts and Capital Assets) and assign them to multiple projects at the same time. To use the Manage Resource Pool feature, simply follow the directions below:

1. Click on the Resource Menu and select the Manager Resource Pool command



2. Once selected, the Manage Resource Pool dialog box will appear. Here is where you can select the desired resource(s) that are assigned to the current project in the box on the left and then select the project(s) that you want to assign them to from the box on the right.



Projects that appear in the Other Projects box that are displayed in bold have a resource name that matched the selected resource. This means that this particular resource is already a resource on that project.

Projects that appear in the Other Projects box that are displayed in gray have a resource that conflicts with one of the selected resources. This means that there already is a resource with that name but it could be a different resource type.

3. Once you have selected the projects you want to assign the selected resource(s) to, click the Assign button.

2. Product Support

For additional information regarding this new feature or other DreamTeam features please contact DreamFactory Support through one of the following support options:

Live Chat – You can initiate a Live Chat with one of our Success Engineers by simply clicking on the Support Menu and selecting the Live Chat option.

Phone Support – You can contact our Support Engineers by phone at 1-877-577-3453 or by selecting the Phone Support option from the Support Menu.

Email Support – You can also email DreamFactory Support at support@dreamfactory.com.

Support Wiki – You can access additional information by accessing the DreamFactory Support Wiki online at <http://dreamfactory.pbworks.com/SnapShot>.

DreamFactory Support is available 5:00 AM until 5:00 PM PST (8:00 AM – 8:00PM EST) M-F.